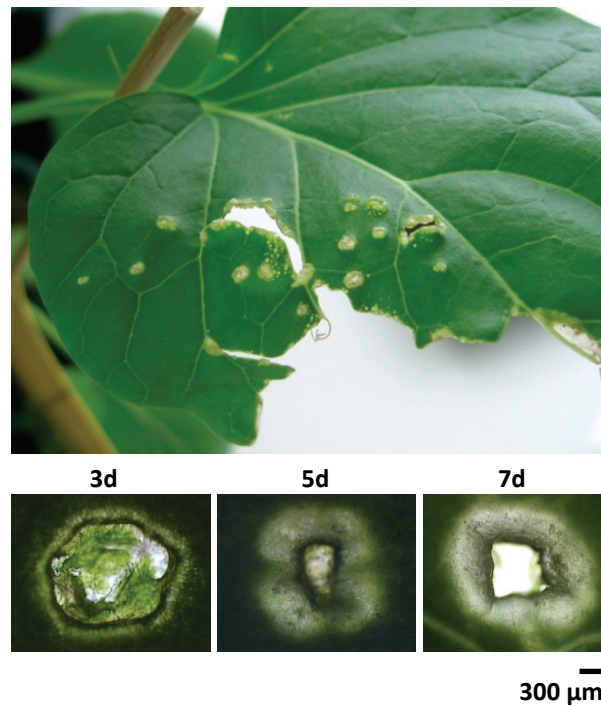


Supplemental Figure S1:

Leaf cyclin B1 expression shows no major differences between WT and mETR1asLOX3 plants after treatment with W+OS. Relative transcript abundance of cyclin B1 in WT, mETR1, asLOX3 and mETR1asLOX3 leaves was measured by qRT-PCR before, 6, 20 and 60 h after W+OS treatment. Values are the means of 3 replicate measurements with SE indicated.



Supplemental Fig. S2:

Mechanically wounded *Brassica oleracea* leaves respond to wounding as *N. attenuata* mETR1asLOX3 leaves. The young leaf of *Brassica oleracea* L. var. geminifera "Rosella" was mechanically wounded and observed approximately 2 weeks later. An extensive cell expansion around wounds, similar to mETR1asLOX3 phenotype, developed on the leaves (top). Young *B. oleracea* leaves were wounded with a pattern wheel and immediately treated with OS from *M. sexta*. Leaves were observed under microscope at 3, 5 and 7 d after treatment (bottom), showing development of a clear zone around wounds.