

## ORIGINAL ARTICLE

## X-exome sequencing of 405 unresolved families identifies seven novel intellectual disability genes

H Hu<sup>1,41</sup>, SA Haas<sup>2,41</sup>, J Chelly<sup>3,4</sup>, H Van Esch<sup>5</sup>, M Raynaud<sup>6,7,8</sup>, APM de Brouwer<sup>9</sup>, S Weinert<sup>10,11</sup>, G Froyen<sup>12,13</sup>, SGM Frints<sup>14,15</sup>, F Laumonier<sup>6,7</sup>, T Zemojtel<sup>2</sup>, MI Love<sup>2</sup>, H Richard<sup>2</sup>, A-K Emde<sup>2</sup>, M Bienek<sup>1</sup>, C Jensen<sup>1</sup>, M Hambrock<sup>1</sup>, U Fischer<sup>1</sup>, C Langnick<sup>10</sup>, M Feldkamp<sup>10</sup>, W Wissink-Lindhout<sup>9</sup>, N Lebrun<sup>3,4</sup>, L Castelneau<sup>3,4</sup>, J Rucci<sup>3,4</sup>, R Montjean<sup>3,4</sup>, O Dorseuil<sup>3,4</sup>, P Billuart<sup>3,4</sup>, T Stuhlmann<sup>10,11</sup>, M Shaw<sup>16,17</sup>, MA Corbett<sup>16,17</sup>, A Gardner<sup>16,17</sup>, S Willis-Owen<sup>16,18</sup>, C Tan<sup>16</sup>, KL Friend<sup>19</sup>, S Belet<sup>12,13</sup>, KEP van Roozendaal<sup>14,15</sup>, M Jimenez-Pocquet<sup>8</sup>, M-P Moizard<sup>6,7,8</sup>, N Ronce<sup>6,7,8</sup>, R Sun<sup>2</sup>, S O'Keefe<sup>2</sup>, R Chenna<sup>2</sup>, A van Bömmel<sup>2</sup>, J Göke<sup>2</sup>, A Hackett<sup>20</sup>, M Field<sup>20</sup>, L Christie<sup>20</sup>, J Boyle<sup>20</sup>, E Haan<sup>16,19</sup>, J Nelson<sup>21</sup>, G Turner<sup>20</sup>, G Baynam<sup>21,22,23,24</sup>, G Gillissen-Kaesbach<sup>25</sup>, U Müller<sup>26,27</sup>, D Steinberger<sup>26,27</sup>, B Budny<sup>28</sup>, M Badura-Stronka<sup>29</sup>, A Latos-Bieleńska<sup>29</sup>, LB Ousager<sup>30</sup>, P Wieacker<sup>31</sup>, G Rodríguez Criado<sup>32</sup>, M-L Bondeson<sup>33</sup>, G Annerén<sup>33</sup>, A Dufke<sup>34</sup>, M Cohen<sup>35</sup>, L Van Maldergem<sup>36</sup>, C Vincent-Delorme<sup>37</sup>, B Echenne<sup>38</sup>, B Simon-Bouy<sup>39</sup>, T Kleefstra<sup>9</sup>, M Willemsen<sup>9</sup>, J-P Frysns<sup>5</sup>, K Devriendt<sup>5</sup>, R Ullmann<sup>1,42</sup>, M Vingron<sup>2</sup>, K Wrogemann<sup>1,40</sup>, TF Wienker<sup>1</sup>, A Tzschach<sup>1</sup>, H van Bokhoven<sup>9</sup>, J Gecz<sup>16,17</sup>, TJ Jentsch<sup>10,11</sup>, W Chen<sup>1,10</sup>, H-H Ropers<sup>1</sup> and VM Kalscheuer<sup>1</sup>

X-linked intellectual disability (XLID) is a clinically and genetically heterogeneous disorder. During the past two decades in excess of 100 X-chromosome ID genes have been identified. Yet, a large number of families mapping to the X-chromosome remained unresolved suggesting that more XLID genes or loci are yet to be identified. Here, we have investigated 405 unresolved families with XLID. We employed massively parallel sequencing of all X-chromosome exons in the index males. The majority of these males were previously tested negative for copy number variations and for mutations in a subset of known XLID genes by Sanger sequencing. In total, 745 X-chromosomal genes were screened. After stringent filtering, a total of 1297 non-recurrent exonic variants remained for prioritization. Co-segregation analysis of potential clinically relevant changes revealed that 80 families (20%) carried pathogenic variants in established XLID genes. In 19 families, we detected likely causative protein truncating and missense variants in 7 novel and validated XLID genes (*CLCN4*, *CNKS2*, *FRMPD4*, *KLHL15*, *LAS1L*, *RLIM* and *USP27X*) and potentially deleterious variants in 2 novel candidate XLID genes (*CDK16* and *TAF1*). We show that the *CLCN4* and *CNKS2* variants impair protein functions as indicated by electrophysiological studies and altered differentiation of cultured primary neurons from *Clcn4*<sup>-/-</sup> mice or after mRNA knock-down. The newly identified and candidate XLID proteins belong to pathways and networks with established roles in cognitive function and intellectual disability in particular. We suggest that systematic sequencing of all X-chromosomal genes in a cohort of patients with genetic evidence for X-chromosome locus involvement may resolve up to 58% of Fragile X-negative cases.

*Molecular Psychiatry* advance online publication, 3 February 2015; doi:10.1038/mp.2014.193

<sup>1</sup>Department of Human Molecular Genetics, Max Planck Institute for Molecular Genetics, Berlin, Germany; <sup>2</sup>Department of Computational Molecular Biology, Max Planck Institute for Molecular Genetics, Berlin, Germany; <sup>3</sup>University Paris Descartes, Paris, France; <sup>4</sup>Centre National de la Recherche Scientifique Unité Mixte de Recherche 8104, Institut National de la Santé et de la Recherche Médicale Unité 1016, Institut Cochin, Paris, France; <sup>5</sup>Center for Human Genetics, University Hospitals Leuven, Leuven, Belgium; <sup>6</sup>Inserm U930 'Imaging and Brain', Tours, France; <sup>7</sup>University François-Rabelais, Tours, France; <sup>8</sup>Centre Hospitalier Régional Universitaire, Service de Génétique, Tours, France; <sup>9</sup>Department of Human Genetics, Radboud University Medical Center, Donders Institute for Brain, Cognition and Behaviour, Nijmegen, The Netherlands; <sup>10</sup>Max-Delbrück-Centrum für Molekulare Medizin, Berlin, Germany; <sup>11</sup>Leibniz-Institut für Molekulare Pharmakologie, Berlin, Germany; <sup>12</sup>Human Genome Laboratory, VIB Center for the Biology of Disease, Leuven, Belgium; <sup>13</sup>Human Genome Laboratory, Department of Human Genetics, K.U. Leuven, Leuven, Belgium; <sup>14</sup>Department of Clinical Genetics, Maastricht University Medical Center, azM, Maastricht, The Netherlands; <sup>15</sup>School of Oncology and Developmental Biology, GROW, Maastricht University, Maastricht, The Netherlands; <sup>16</sup>School of Paediatrics and Reproductive Health, The University of Adelaide, Adelaide, SA, Australia; <sup>17</sup>Robinson Research Institute, The University of Adelaide, Adelaide, SA, Australia; <sup>18</sup>National Heart and Lung Institute, Imperial College London, London, UK; <sup>19</sup>SA Pathology, Women's and Children's Hospital, Adelaide, SA, Australia; <sup>20</sup>Genetics of Learning and Disability Service, Hunter Genetics, Waratah, NSW, Australia; <sup>21</sup>Genetic Services of Western Australia, King Edward Memorial Hospital, Perth, WA, Australia; <sup>22</sup>School of Paediatrics and Child Health, University of Western Australia, Perth, WA, Australia; <sup>23</sup>Institute for Immunology and Infectious Diseases, Murdoch University, Perth, WA, Australia; <sup>24</sup>Telethon Kids Institute, Perth, WA, Australia; <sup>25</sup>Institut für Humangenetik, Universität zu Lübeck, Lübeck, Germany; <sup>26</sup>Institut für Humangenetik, Justus-Liebig-Universität Giessen, Giessen, Germany; <sup>27</sup>bio.logis Center for Human Genetics, Frankfurt a. M., Germany; <sup>28</sup>Chair and Department of Endocrinology, Metabolism and Internal Diseases, Poznan University of Medical Sciences, Poznan, Poland; <sup>29</sup>Chair and Department of Medical Genetics, Poznan University of Medical Sciences, Poznan, Poland; <sup>30</sup>Department of Clinical Genetics, Odense University Hospital, Odense, Denmark; <sup>31</sup>Institut für Humangenetik, Universitätsklinikum Münster, Muenster, Germany; <sup>32</sup>Unidad de Genética Clínica, Hospital Virgen del Rocío, Sevilla, España; <sup>33</sup>Department of Immunology, Genetics and Pathology, Uppsala University, Uppsala, Sweden; <sup>34</sup>Institut für Medizinische Genetik und Angewandte Genomik, Tübingen, Germany; <sup>35</sup>Kinderzentrum München, München, Germany; <sup>36</sup>Centre de Génétique Humaine, Université de Franche-Comté, Besançon, France; <sup>37</sup>Service de Génétique, Hôpital Jeanne de Flandre CHRU de Lille, Lille, France; <sup>38</sup>Service de Neuro-Pédiatrie, CHU Montpellier, Montpellier, France; <sup>39</sup>Laboratoire SESEP, Centre hospitalier de Versailles, Le Chesnay, France and <sup>40</sup>Department of Biochemistry and Medical Genetics, University of Manitoba, Winnipeg, MB, Canada. Correspondence: Dr VM Kalscheuer, Max Planck Institute for Molecular Genetics, Ihnestrasse 73, Berlin 14195, Germany. E-mail: kalscheu@molgen.mpg.de

<sup>41</sup>These authors contributed equally to this work.

<sup>42</sup>Present address: Institut für Radiobiologie der Bundeswehr in Verbindung mit der Universität Ulm, 80937 München, Germany  
Received 4 August 2014; revised 17 November 2014; accepted 8 December 2014

## INTRODUCTION

Intellectual disability (ID), which affects 1–2% of the general population, is characterized by significant sub-average cognitive functioning, commonly defined by an IQ of lower than 70, and deficits in adaptive behavior, such as social and daily-living skills with an onset before 18 years of age. Most severe forms have a single genetic cause, and males are more often affected than females. Therefore, for many years, research has focused on the molecular elucidation of X-linked forms of ID which are thought to account for 10–12% of all males with ID.<sup>1</sup> Until 2007, mutations in XLID genes known at that time had been detected in 42% of the Fragile X-negative families studied.<sup>2</sup> Afterwards, a large-scale, comprehensive Sanger sequencing study was performed to identify the missing genes and mutations in a cohort of 208 families.<sup>3</sup> This study was complemented by high-resolution array CGH profiling on the same set of families<sup>4</sup> and by further genetic and functional evidence for some of the unique missense variants.<sup>5–7</sup> However, in excess of 50% XLID families remained without plausible gene defects further indicating genetic heterogeneity of XLID. Since then, several novel XLID genes have been reported in the medical literature, including *HUWE1* [MIM 300697],<sup>8</sup> *SLC9A6* [MIM 300231],<sup>9</sup> *PCDH19* [MIM 300460],<sup>10</sup> *RAB39B* [MIM 300774],<sup>11</sup> *HDAC8* [MIM 300269],<sup>12</sup> *HCFC1* [MIM 300019],<sup>13</sup> *CCDC22* [MIM 300859],<sup>14,15</sup> *USP9X* [MIM 300072],<sup>6</sup> *PIGA* [MIM 311770],<sup>16</sup> *WDR45* [MIM 300526],<sup>17</sup> *KDM6A* [MIM 300128],<sup>18</sup> *BCAP31* [MIM 300398],<sup>19</sup> *ZC4H2* [MIM 300897],<sup>20</sup> *KIAA2022* [MIM 300524]<sup>21</sup> and *MID2* [MIM 300204].<sup>22</sup>

In this study, we aimed to (i) identify the molecular causes of XLID in a large group of unresolved families, (ii) define the number of XLID genes that can be identified by performing targeted sequencing of all X chromosome-specific exons, (iii) gain knowledge about ID-related pathways and networks and (iv) estimate the proportion of families with XLID that can be solved using X-exome sequencing. For this, we initially focused on 248 families collected by the EUROMRX consortium and associated groups that remained unresolved by pre-screening for mutations in selected known XLID genes and by array CGH. In follow-up work we investigated an additional cohort of 157 similarly pre-screened families. We took advantage of next-generation sequencing (NGS) technology to substantially improve the coverage of X-chromosomal coding sequences compared with previous studies. We identified likely pathogenic variants in a range of previously established XLID genes as well as several novel and candidate XLID genes.

## SUBJECTS AND METHODS

### Subjects

All index cases had a normal karyotype, were negative for *FMR1* repeat expansion, and in most of these large indels had been excluded using array CGH. The study was approved by all institutional review boards of the participating institutions, and written informed consent was obtained from all participants or their legal guardians.

### Methods

For each family, DNA from one affected male was used for constructing a sequencing library using the Illumina Genomic DNA Single End Sample Prep kit (Illumina, San Diego, CA, USA). Enrichment of the X-chromosomal exome was then performed for each library using the Agilent SureSelect Human X Chromosome Kit (Agilent, Santa Clara, CA, USA), which contains 47 657 RNA baits for 7591 exons of 745 genes of the human X chromosome. Single-end deep sequencing was performed on the Illumina Genome Analyzer GAIIX (Illumina, San Diego, CA, USA). Read length was 76 nucleotides. For a subset of families of the second cohort, we performed droplet-based multiplex PCR (7367 amplicons, 757 genes, 1.54 Mb) similarly to the previously described study.<sup>23</sup> Paired-end deep sequencing was performed on the HiSeq2000 platform (ATLAS, Berlin, Germany). A scheme outlining the variant discovery workflow is presented in Supplementary Figure 1.

Reads were extracted from qseq-files provided by the Illumina GAI system (Illumina). Reads containing ambiguous base calls were not

considered for further analysis. The remaining reads were subsequently mapped to the human reference genome (hg18 without random fragments) with RazerS<sup>24</sup> (parameters: -mcl 25 -pa -m 1 -dr 0 -i 93 -s 11010111001100010111 -t 4 -lm) tolerating up to 5 bp differences to the reference sequence per read. Only unique best matches were kept, whereas all remaining reads and those containing indels were subjected to a split mapping procedure of single end reads (SplazerS version 1.0,<sup>25</sup> parameters: -m 1 -pa -i 95 -sm 23 -s 111001110011100111 -t 2 -maxG 50000) to detect short insertions ( $\leq 30$  bp) and larger deletions ( $< 50$  kb). For detecting large insertions/deletions by analyzing changes in depth of coverage along the targeted regions we used ExomeCopy.<sup>26</sup> We performed a quality-based clipping of reads after mapping but before calling variants to minimize the number of false-positive calls. Starting from each end of a read with a sliding window of 10 bp we trimmed the read until we observed a window with all 10 phred base quality values  $> 10$ . If there was a variant within 3 bp distance to the clipped region then the trimming was expanded up to this potential sequencing error. For both mapping procedures (RazerS+SplazerS) the calling of a variant required at least three reads with different mapping coordinates to exclude potential amplification artifacts. Single-nucleotide polymorphisms (SNPs) and short indels ( $\leq 5$  bp) were called with snpStore (parameters: -reb 0 -fc 10 -m 1 -mmp -mc 3 -oa -mp 1 -th 0.85 -mmq 10 -hr 0.001 -re -pws 1000), performing a realignment of the clipped mapped reads whenever at least three indel-containing reads were observed within close proximity. For an indel to be called no more than 75% of the spanning reads were allowed to contradict it. For single base variants we used the Maq consensus statistics<sup>27</sup> integrated into the snpStore code. Larger deletions and small insertions were identified by examining the split mapping results for potential breakpoint positions. In case of multiple such positions implying varying indel lengths within a 20-bp range such candidate calls were assumed to be unreliable and were therefore discarded. To detect potential retrocopies, the boundaries of split read mappings were compared with known exon boundaries allowing a tolerance of  $\pm 5$  bp. When both split ends coincided with exon boundaries these exons were defined as being part of a retrocopy event. Completeness of the retrocopy was defined by the highest fraction of exons per transcript for which exon-spanning reads were detected. One example is shown in Supplementary Figure 2. In a parallel approach, we processed the sequencing reads using an alternative software, Medical Resequencing Analysis Pipeline (MERAP), for mapping, variant calling, and annotation.<sup>28</sup> Here, the mapping was performed using SOAP2.<sup>29</sup> allowing at most two mismatches. For the calling of single-nucleotide variants (SNVs) and indels a minimum of four reads and a more stringent Phred-like quality score of  $\geq 20$  were required. Finally, only those variants called by both approaches were kept to yield high-confidence candidate variants.

For *in silico* prioritization of variants, we integrated the following features: (a) gene/transcript annotations (downloaded from UCSC Genome Browser, hg19); (b) known sequence variants from the following data sources: dbSNP, 1000 Genomes project, 200 Danish exomes,<sup>30</sup> NHLBI Exome Sequencing Project (ESP6500, version without indels). Base exchanges were considered as 'known' (with exception of SNVs observed as only heterozygous in ESP6500 and 1000 Genomes project) if position and type of the nucleotide were identical to entries in the reference databases. We did not use a cutoff based on minor allele frequency. In case of short indels, a tolerance in positional matching was applied based on repetitiveness of the deleted/inserted sequence in the SNV flanking sequence; (c) variants detected in the screen performed by Tarpey *et al.*<sup>3</sup> were located in transcripts derived from ENSEMBL version 54. We defined the amino-acid coordinate shared by most transcripts of a gene as reference, which is sometimes different from the one annotated by Tarpey *et al.*<sup>3</sup> Conversion of coordinates was successful for 1647 variants; (d) evolutionary conservation across 44 vertebrate species;<sup>31</sup> (e) splice site detection for defining potential cryptic splice sites (software NNSplice; cutoff 0.9 (ref. 32)); (f) potential functional impact: PolyPhen2,<sup>33</sup> SIFT<sup>34</sup> and (g) Human Gene Mutation Database (HGMD): known variants with Pubmed entries were treated as potentially disease causing if they were listed in HGMD Professional and annotated in maximally one reference SNV database.

We thus defined a prioritization score (PS) based on basic, computationally tractable criteria like type of variant or evolutionary conservation. Polyphen2/SIFT produces a categorical output (benign/tolerated, possibly damaging/low confidence, probably damaging/damaging), which was assigned to ordinal variables 1, 2 or 3. Numbers are decreasing with decreasing functional impact, missing values are scored nil. Whenever only one of the methods scored  $> 0$ , the zero score was set to 1 to avoid underestimation of the functional impact. PhyloP values were rounded

down to decimal numbers, values  $>5$  were set to  $\text{PHY}=5$ , for values  $<2$   $\text{PHY}=1$ , for values  $<0$   $\text{PHY}=0$ . Since deletions/insertions are usually not scored by PolyPhen2/SIFT, we defined the following adhoc weighting scheme: non-sense/frameshift:  $\text{TYPE}=20$  (maximal PS), deletions ( $>50$  bp):  $\text{TYPE}=9$  (similar to maximal impact prediction by PolyPhen2 and SIFT), duplications, in-frame deletions, potential splice site variants:  $\text{TYPE}=3$ . The score for a change identified in a gene known to have a role in XLID before this study was set to 3.  $\text{PS}=\text{PP2} * \text{Sift}+\text{PHY}+\text{TYPE}+\text{XLID}$ ; if  $\text{PS}>20$ ,  $\text{PS}=20$ .

We also used CADD (Combined Annotation-Dependent Depletion)<sup>35</sup> as an additional tool for annotating and interpreting SNVs as well as small indels (see Supplementary Figure 3 for comparison of the scores).

#### Analysis of human *CLCN4* SNVs in *Xenopus* oocytes

*CLCN4* SNVs were introduced into human *CLCN4* (NM\_001830.3; Gene ID: 118) cDNA cloned into pTLN and pCneo<sup>36</sup> by recombinant PCR. We assessed the expression level and stability of wild-type and mutants with p.Gly78Ser, p.Leu221Val, p.Val536Met or p.Gly731Arg substitutions by western blot analysis of lysates from transiently transfected cells using standard methods. *Xenopus laevis* oocytes were injected with 23 ng cRNA, which was transcribed with the mMessage Machine kit (Ambion, Thermo Fisher Scientific Inc., Waltham, MA, USA) from pTLN.<sup>37</sup> After 3 days incubation at 17°C, currents were measured at room temperature using standard two-electrode voltage clamp employing TurboTEC amplifiers (npi electronic, Tamm, Germany) and pClamp10.2 software (Molecular Devices, Sunnyvale, CA, USA). Oocytes were superfused with modified ND96 saline (96 mM NaCl, 2 mM K-gluconate, 1.8 mM Ca-gluconate, 1 mM Mg-gluconate, 5 mM HEPES pH 7.5) and clamped in 20-mV steps to voltages between  $-100$  and  $+80$  mV. The holding potential was  $-30$  mV.

#### Morphological studies of mouse hippocampal neurons

Mouse embryos were dissected at embryonic day 16.5 (E16.5), tissue was dissociated by trypsin as well as by mechanical treatment, and primary cultures of hippocampal neurons were established at 37°C by plating on coated-glass coverslips (poly-L-Lysine and Laminin) at a density of 100 000 per 16 mm Petri dish. Neurons were differentiated for 18 days *in vitro* (18 DIV) using Neurobasal/B27 medium and antibiotics (Mycozap, Lonza, Basel, Switzerland), replacing half of the media each third day for maintenance according to standard procedures.<sup>38,39</sup> Short-hairpin RNA (shRNA) design was made by targeting the 3'UTR of each specific gene using Promega shRNA designer tools (Promega BioSciences, San Luis Obispo, CA, USA) or information based on The RNAi Consortium (TCR) shRNA Library. A control shRNA-producing plasmid was used in control experiments as previously described.<sup>40</sup> Three independent shRNA-producing and GFP-expressing plasmids, based on pSystrike vector (Promega), were produced for each gene and used as a pool. Sequences targeted by shRNAs for *Cnksr2* and *Cln4-2* (*Cln4*) genes and control sequences are GGAGCAGAGG ATGGCAGTCATTCA, GGTGGGAAGGCTAGCTCTGTTACT, GCGCGCGTATCAG GGC AAAGCTT, GGGTATGTGGGAGGGTGTAAATGA, GGGAGAGCGAGTAC GAAGATGAA, GTGGTCTACTCATGGCCATCTCAT and GCTCACCTTCTACTC TC. Full-length murine *Cnksr2* (NCBI reference sequence NM\_177751.2) and *Cln4* (NCBI reference sequence NM\_011334.4) cDNAs were cloned into pFN21A HaloTag<sup>®</sup> CMV Flexi<sup>®</sup> vector (Promega). For rescue experiments, pool of plasmids encoding shRNAs were cotransfected with pFN21A HaloTag<sup>®</sup> fused to either *Cnksr2* or *Cln4*. All constructs were sequence verified and plasmids were purified using an endotoxin-free kit (Macherey Nagel, Düren, Germany). Transfections were carried out using Lipofectamine (Invitrogen, Life Technologies, Carlsbad, CA, USA) at 11 DIV and cells were fixed at a later stage of differentiation for analysis (DIV 18). Individual neurons were directly imaged under fluorescence and confocal microscopy (spinning disk microscope, Leica, Leica Microsystems, Wetzlar, Germany) using GFP labeling as a tracer of morphology. Immunocytochemistry to detect GFP (goat antibody, Abcam, Cambridge, UK) and HaloTag constructs (HaloTag TMR Ligand, Promega) was also realized according to standard procedures. Image analysis was done using Imaaris software with 'Filament tracer' plugin (Bitplane Scientific Software, Bitplane AG, Zürich, Switzerland) and ImageJ software (Wayne Rasband, Bethesda, NIH). It allowed quantifying total arborization of neurites (dendrites and axon) for each neuron (total length of neurites, numbers of branches, branching complexity), see Supplementary Figure 4 for details on branching analysis. Quantification was based on three independent experiments with more than 15 cells of each type per experiment analyzed. Mann-Whitney statistical test was used to compare total neuritic length as well as number of branches, whereas Chi-square test was used to

evaluate significance of variations in branching complexity. Primary cultures of hippocampal neurons from wild-type and *Cln4*<sup>-/-</sup> mice<sup>41</sup> were obtained as described above with some minor differences. Animals were dissected at postnatal day 1 (P1), papain was used for dissociation of tissue, and glass coverslips were coated with poly-L-Lysine and collagen. At DIV 11, neurons were transfected with pEGFP-C1 vector (Clontech, Mountain View, CA, USA) using Lipofectamine-2000 according to the manufacturer's instructions. Cells were fixed and stained at DIV15 or DIV18 as described previously.<sup>42</sup> Primary antibodies were chicken anti-GFP (Aves Lab, Tigard, Oregon, USA) and mouse anti-microtubule associated protein 2 (Chemicon/Millipore, Merck/Millipore, Darmstadt, Germany) as a neuronal marker. Secondary antibodies conjugated to Alexa Fluor 488 or 546 were from Molecular Probes. Images were taken using a LSM510 laser scanning confocal microscope equipped with a  $\times 10$  lens (Zeiss). Image analysis was performed in a blinded manner using ImageJ and its plugin NeuronJ: ns (non-statistically different), \* $P < 0.05$ , \*\* $P < 0.01$ , \*\*\* $P < 0.001$  for validation.

## RESULTS

Initially, using genome partitioning and NGS we investigated a cohort of 248 unresolved families with suggestive X-chromosome involvement. Each of the families has at least 2 affected males and in 210 families affected males were present in separate sibships. Before this study, 125 of the index patients had been prescreened for different (per case) known XLID genes.<sup>2,23</sup> For 1/3 of the 248 families, linkage data were available. For enrichment, we used probes covering 745 X-chromosome genes, including 1 224 575 bp in coding regions and 2 400 136 bp in exonic regions. In all, 92% of the target sequences were covered by at least three sequence reads, and 94.2% were covered by at least one read (Supplementary Figures 5, 6, 7 and 8). In total, we identified 3378 recurrent and 1299 non-recurrent exonic variants, which were also found in control populations (Table 1). After filtering against variants from  $>7000$  controls, present in publicly available databases as well as our in-house database, 28 recurrent and 765 non-recurrent exonic variants, as well as 16 potential splice site variants remained (Tables 1–3, Supplementary Tables 1, 2, 3 and 4).

As a follow-up study we investigated an additional cohort of 157 unresolved, similarly pre-screened XLID families. For this cohort, we present data on pathogenic variants identified in known XLID genes, likely or potentially pathogenic variants in novel and candidate XLID genes and truncating variants unlikely implicated in XLID.

For validation and segregation analyses, we prioritized variants by defining a prioritization score (PS). This score incorporates several computationally tractable pieces of information including the type of variant, evolutionary conservation and (if available) evidence that the gene has a role in XLID. Except for duplications and small in-frame indels, variants with a PS of  $\geq 5$  were considered as strong candidates for follow-up studies. More recently, we also assigned C-scores obtained by applying CADD<sup>35</sup> for ranking SNVs and short indels.

#### Pathogenic variants identified in known XLID genes

A critical survey of the medical literature suggests that there are currently  $\sim 90$  well-established XLID genes (79 previously known genes proposed as 'confirmed' by Piton *et al.*<sup>43</sup> plus *HCFC1*,<sup>13</sup> *MAOA*,<sup>44</sup> *CCDC22*,<sup>14</sup> *USP9X*,<sup>6</sup> *PIGA*,<sup>16</sup> *WDR45*,<sup>17</sup> *KDM6A*,<sup>18</sup> *BCAP31*,<sup>19</sup> *ZC4H2*,<sup>20</sup> *KIAA2022*,<sup>21</sup> *MID2*<sup>22</sup>). In these genes, we identified likely pathogenic variants in 39 of the 248 families (16%) and in 16 of the 157 families (10%), which together with the 24 families from these two cohorts that were resolved through this screen and were published earlier,<sup>7,20,21,23,45–50</sup> account for 21 and 18% of the cohorts (for details, see Supplementary Tables 5 and 6). The variants include co-segregating protein truncating variants, in-frame deletions or missense changes and none of them were reported in 61 486 unrelated individuals (ExAC Browser). According to the current literature and HGMD (as of May 2014), for some



**Table 1.** Overview of sequence variants identified in 248 index patients with XLID

Variant class	Variants found in the study cohort and present in control populations <sup>a</sup>			Variants found in the study cohort and absent in control populations <sup>a</sup>		
	Recurrent	Non-recurrent	Total	Recurrent	Non-recurrent	Total
Synonymous	602	262	864	9	235	244
Missense	606	356	962	15 (1)	461 (9)	476
Non-sense	6	4	10	0	13	13
In-frame indels (< 50 kb)	13	4	17	1	18 (1)	19
Small frameshift indels (≤50 kb)	12	7	19	3	29 (1)	32
Large indels (> 50 kb)	0	0	0	0	9 <sup>b</sup>	9
Total	1239	633	1872	28	765	793
Canonical splice sites	7	3	10	2	10	12
Retrocopies	0	0	0	3	5	8
Potential cryptic splice sites	0	0	0	0	4	4
Non-coding exons	2132	663	2795	342	1468	1810
Total	3378	1299	4677	375	2252	2627

Abbreviations: HGMD, Human Gene Mutation Database; XLID, X-linked intellectual disability. <sup>a</sup>Variants present in HGMD with PubMed entries (numbers shown in parentheses) were treated as potentially disease relevant and therefore were excluded from filtering against control populations (dbSNP 135, Exome Variant Server, NHLBI Exome Sequencing Project (ESP), Seattle, WA, 1000 Genomes Project, 200 Danish exomes<sup>3</sup>). Indels = insertions and deletions. <sup>b</sup>Three duplications were only detected by using a Hidden-Markov Model-based method.<sup>30</sup>

of these XLID genes only very few families with pathogenic variants have so far been reported, suggesting that mutations in these genes are very rare. One example is *ACSL4* (previously known as *FACL4* [MIM 300157]), which has a role in long-fatty-acid metabolism. Its involvement in XLID was discovered more than 10 years ago.<sup>51</sup> Yet, until today a total of only four unrelated families with pathogenic point variants in *ACSL4* have been published. These include one recurrent amino-acid change and one splicing variant.<sup>51–53</sup> We identified a non-sense variant in this gene (chrX:108902601G>A, p.Arg654\*) present in one family (Supplementary Table 5). Our results strongly support that *ACSL4* mutations cause XLID. In *NLGN3* [MIM 300336], that is known as 'autism' gene with currently two likely pathogenic missense and two potentially disease relevant splicing variants reported in the literature,<sup>54–56</sup> we identified a likely deleterious stop codon (p.Arg162\*) which is expected to remove most part of the protein. The variant could not be tested for segregation because additional family members were unavailable. The 29-year-old affected is the first and only child of unrelated and healthy parents. He presented with moderate ID, severe behavioral problems, especially abnormal sexual behavior and aggression. There was no formal diagnosis of autism. We have also identified pathogenic variants in ID genes with widely varying phenotypes, which are difficult to diagnose by clinical examination alone. One example is *PQBP1* [MIM 300463] in which we found a pathogenic single nucleotide deletion that causes a frameshift resulting in a premature stop codon (p.Phe240Serfs\*26, Supplementary Table 5). As a result of this molecular diagnosis, careful reexamination of the affected boys revealed subtle dysmorphic features that are in good agreement with the currently known *PQBP1* clinical spectrum.

One of the established XLID genes with several likely pathogenic variants identified in our study groups is *MED12* [MIM 300188]. Missense variants in this gene have been linked with Lujan-Fryns syndrome<sup>57</sup> [MIM 309520], Opitz-Kaveggia syndrome<sup>58</sup> [MIM 305450] and Ohdo syndrome<sup>59</sup> [MIM 300895]. In addition to the previously published large family with a protein truncating variant associated with a profound phenotype in males and several heterozygous female carriers with variable cognitive impairment,<sup>28</sup> we identified segregating likely pathogenic missense variants in three families (Supplementary Table 5). Similarly, eight XLID families carry pathogenic variants in *CUL4B* [MIM 300304] (Supplementary Table 5).<sup>50</sup>

Likely pathogenic variants in novel XLID genes and previously proposed candidate genes

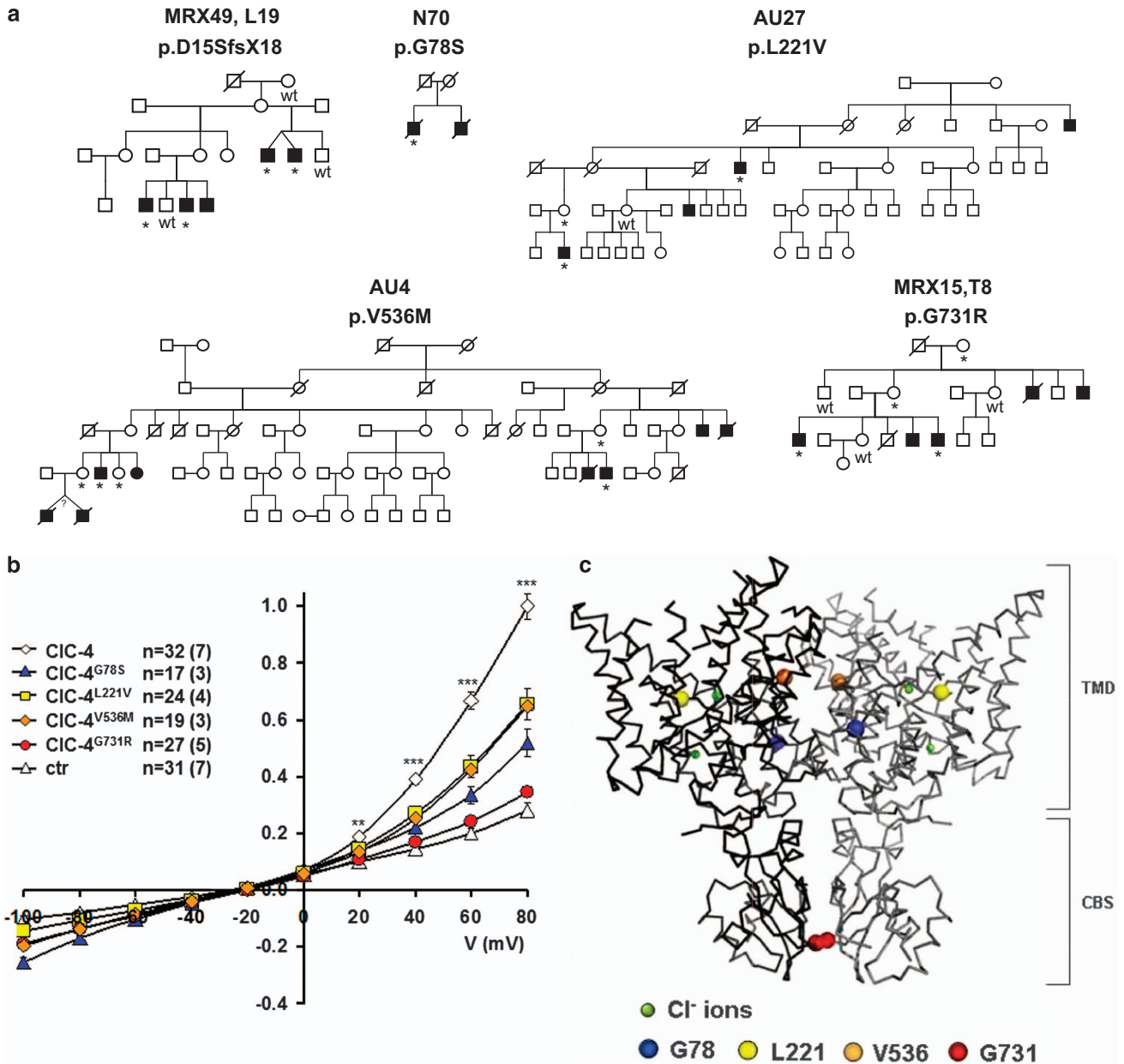
We identified likely deleterious variants in four novel XLID genes and validated three previously suggested candidates, described here in more detail, including *CLCN4* [MIM 302910], *CNKSR2* [MIM 300724], *FRMPD4* [MIM 300838], *KLHL15*, *LAS1L*, *RLIM* [MIM 300379] and *USP27X*. We propose these genes to be confirmed or novel X-chromosome ID genes based on our genetic, bioinformatic and functional evidence as well as current knowledge extracted from the literature. All but one variant identified in these genes co-segregated with ID in the relevant families (Table 2, Figures 1 and 2).

In *CLCN4*, that encodes the electrogenic chloride/proton exchanger CIC-4,<sup>60</sup> we discovered a protein truncating variant (p.Asp15Serfs\*18, family MRX49<sup>61</sup>) and four missense variants (p.Gly731Arg, family MRX15,<sup>62</sup> p.Leu221Val, p.Val536Met, p.Gly78Ser) (Figure 1a). ID of the affected males was variable, even within families, ranging from mild to severe. Similarly, intra- and interfamilial variable clinical features include epilepsy, dysmorphic face, scoliosis and strabismus (for detailed clinical information, see Supplementary Table 7). All affected amino-acid residues lie within the transmembrane part or in the cytoplasmic, carboxy terminus of the protein (Figure 1c). To provide further evidence that the missense variants identified impair CIC-4 protein function, we performed analyses in *Xenopus laevis* oocytes. Compared with the strong outwardly-rectifying currents of wild-type CLC-4 (refs. 36,60) currents were much smaller or even absent with CIC-4 constructs carrying the point variants, showing that these substitutions markedly impaired the function of the CIC-4 protein (Figure 1b). In the crystal structure of algal CmCIC,<sup>63</sup> p.Gly731 is located just at the contact sites of the cytosolic cystathionine-β-synthase (CBS) domains of the different subunits of the CIC-4 homodimer. Since CBS domains have been implicated in the gating of CLC channels,<sup>64,65</sup> the p.Gly731Arg substitution may interfere with this process. We additionally analyzed the effects of the mouse counterpart, *Cln4*, on neuronal differentiation by transfecting hippocampal neurons at day-in-vitro 11 (DIV11) with knock-down constructs targeting this gene and evaluated the cells at a later stage of differentiation (DIV18). At this stage, neuronal differentiation is complete and was clearly affected in *Cln4*-depleted cells. Indeed, compared with controls that were transfected with a non-silencing construct, in *Cln4* depleted cultures neurons were less

**Table 2.** Variants identified in novel XLID genes and candidates

Family ID	Gene	Variant	PS score	C score	Additional information (numbers indicate informative affected/unaffected males tested for segregation/obligate female carriers)	Summary of clinical information for families per gene
<i>Likely pathogenic variants in novel and validated XLID genes</i>						
MRX49 <sup>s1</sup> /L19	CLCN4	p.Asp155Serfs*18	20	36	4/2/2, F, encodes a proton-chloride antiporter	Non-specific borderline to profound ID
MRX15 <sup>oz</sup> /T8	CLCN4	p.Gly731Arg	8	29	F, cytosolic cystathionine- $\beta$ -synthase domain, may impair transporter opening	
N70	CLCN4	p.Gly78Ser	14	25	1/0/1, F, transmembrane domain	
AU27	CLCN4	p.Leu221Val	8	25	2/0/4, F, transmembrane domain	
AU9	CLCN4	p.Val536Met	14	27	3/0/7, F, transmembrane domain	
P180	CNKSR2	p.Asp152Argfs*8	20	19	3/0/1, F, C, encodes connector enhancer of kinase suppressor of Ras 2, interacts with PSD95, XLID protein DLG3, ID/autism protein SHANK3	ID, attentional problems, hyperactivity, language loss, seizures <sup>59</sup>
P58	FRMPD4	p.Cys618Valfs*8	20	38	5/2/2, encodes FERM and PDZ domain containing 4, interacts with PSD95, with ARHGEP7, a guanine nucleotide exchange factor with a role in the regulation of spine morphogenesis, and with actin filaments <sup>106,123</sup>	Mild to severe ID with variable seizures, lack of speech or poor speech, behavioral problems
L87	FRMPD4	p.Cys553Arg	4	16	<i>De novo</i>	
D60	KLHL15	p.Tyr394Ilefs*61	20	33	8/1/4, encodes kelch-like 15, large family with 8 affected in three generations	Mild to moderate ID, mild facial features
MRXS <sup>66</sup> /AU10	LAS1L	p.Ala269Gly	10	18	5/0/19, C, encodes Las1-like, ribosome biogenesis	Wilson-Turner syndrome, <sup>66</sup> mild to moderate ID, obesity, facial features, speech impairment, variable behavioral problems, gynecomastia, small/undescended testes/hypogonadism, tapering fingers
T50	LAS1L	p.Arg415Trp	11	14	3/2/3, C	
MRX61/T11	RLIM	p.Pro587Arg	11	13	3/1/3, encodes ring finger protein. LIM domain interacting, E3 ubiquitin-protein ligase, binds to transcription factors that play important roles for the development of neuronal structures and cell types	Non-specific mild to profound ID in two families with variable behavior problems, ID, microcephaly, micrognathia and cryptorchidism in all affected of one family
D72	RLIM	p.Arg387Cys	12	12	1/2/8	
AU31	RLIM	p.Arg599Cys	14	18	2/3/3	
D177	USP27X	p.Ser342Argfs*14	20	10	3/0/2, encodes ubiquitin-specific peptidase 27, interacts with USP22 which deubiquitinates core histones H2A and H2B, USP22 interacts with ARID gene KIF7	Borderline to moderate ID, variable absent or poor speech and behavioral problems
L75	USP27X	p.Tyr381His	12	11	1/1/2, this residue is part of a domain (IPR001394) and using HOPE web server (see URLs) the variant is predicted to cause an empty space in the core of the protein or protein complex and to cause loss of hydrophobic interactions	
<i>Potentially deleterious changes in novel candidate genes</i>						
L56	CDK16	p.Trp326Valfs*5	20	37	4/1/3, encodes cyclin-dependent kinase 16, also known as PCTK1, PCTAIRE1, and PCT-1	ID, spastic paraplegia
N67	TAF1	p.Asn493Asp	13	19	2/0/2, encodes TATA box binding protein (TBP)-associated factor, 250 kDa, subunit of TAFII which plays a key role transcription initiation. Drosophila homolog phosphorylates histone H2B, variants in TAF2 cause ARID <sup>78,79</sup>	Mild to severe ID, facial features
D185	TAF1	p.Arg1190Cys	14	27	2/4/7	

Abbreviations: C, clinical evidence; F, functional evidence from this study; HGMD, Human Gene Mutation Database; ID, intellectual disability; PS, prioritization score, includes type of variant, evolutionary conservation and predictions from Polyphen2 and SIFT; C score obtained by using Combined Annotation-Dependent Depletion (CADD);<sup>35</sup> XLID, X-linked intellectual disability.

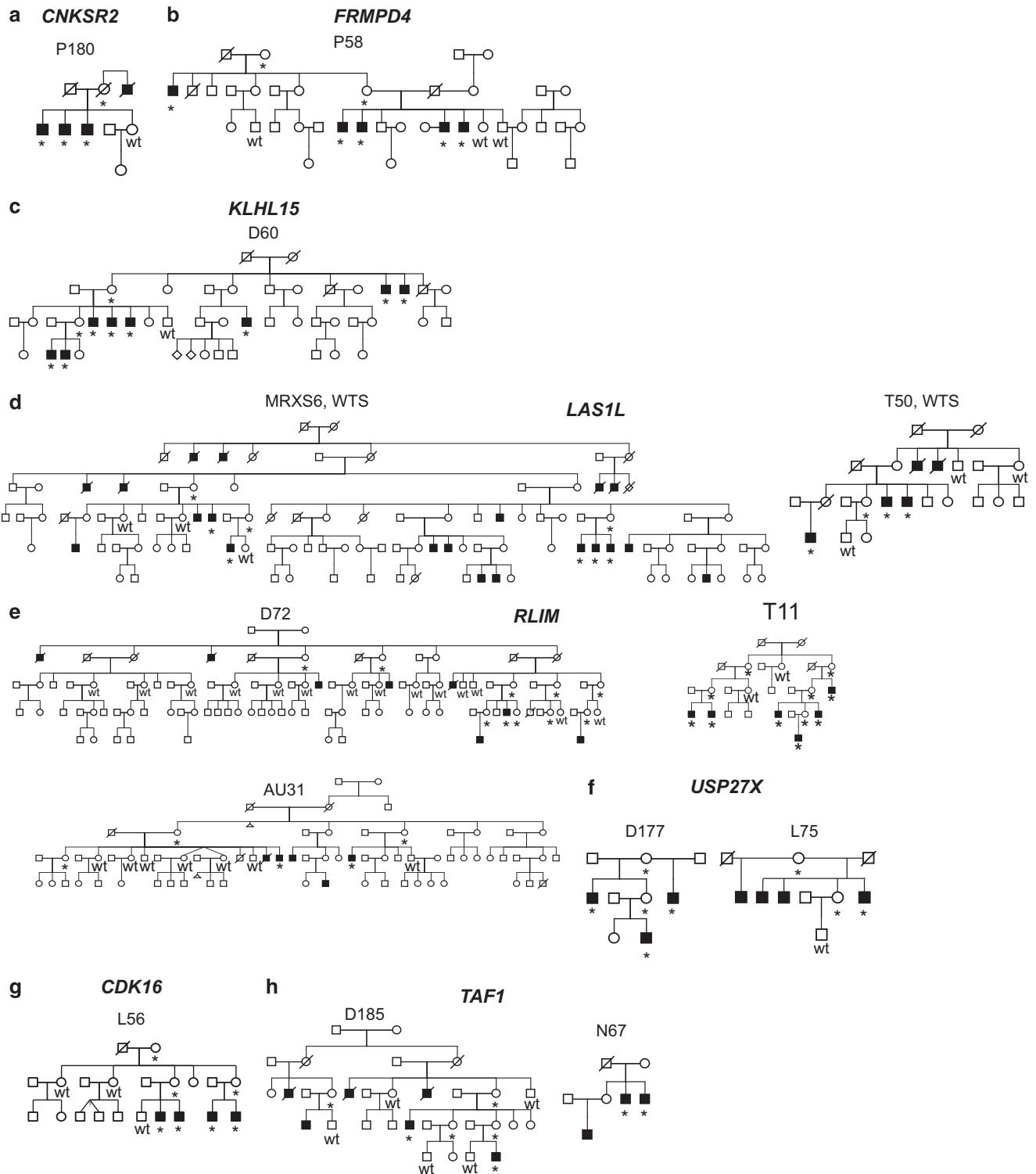


**Figure 1.** Apparently pathogenic *CLCN4* mutations identified in the screen and functional analysis of the missense variants. **(a)** Pedigrees of families with *CLCN4* likely pathogenic mutations. Individuals tested for co-segregation with X-linked intellectual disability (XLID) and the results are indicated, \* = mutation carrier, wt = subject does not carry the mutation. **(b)** Current-voltage relationships of the electrogenic Cl<sup>-</sup>/H<sup>+</sup> exchanger protein CIC-4 and its mutants expressed in *Xenopus* oocytes, shown as mean values of normalized steady-state currents from several oocytes (numbers indicated in figure, in parentheses: number of frogs). Compared with the strongly outwardly-rectifying currents of wild-type CIC-4,<sup>36,121</sup> currents were much smaller or even absent with CIC-4 mutant proteins carrying p.Gly78Ser, p.Leu221Val, p.Val536Met and p.Gly731Arg substitutions. ctr, non-injected controls; error bars, s.e.m. Two-tailed *t*-test was used for statistical comparisons (\*\**P* < 0.01, \*\*\**P* < 0.001 compared with wild-type CIC-4 currents). **(c)** Analogous positions of amino acids mutated in CIC-4 highlighted in the crystal structure of CmCIC-4.<sup>63</sup> Amino acids are displayed as spheres in colors like in **(b)**. The small green spheres represent Cl<sup>-</sup> ions. CLC transporters form dimers of identical subunits (shown in different shades) and include a transmembrane domain (TMD) and two cytosolic cystathionine-β-synthase (CBS) domains.

branched, that is, the total length of neuritic branches was decreased by 30% corresponding to less dendritic branches per cell. However, there was no effect on the complexity of dendritic branching. Introduction of CIC-4 protein in knock-down cells using RNAi-insensitive cDNA rescued both dendritic phenotypes to control levels, thus highlighting the specificity of the phenotype truly associated with the loss of CIC-4 protein (Figure 3a). Primary

neurons derived from *Clcn4*<sup>-/-</sup> mice<sup>41</sup> confirmed these findings (Figure 3b). Although the observed morphological changes were more subtle when compared with those obtained with the shRNA-mediated knock-down, they were statistically significant.

In *CNKSR2* (also known as *CNK2*, *KSR2*, *MAGUIN*), we identified a likely pathogenic frameshift variant (p.Asp152Argfs\*8) in a family with four affected males. This variant was present in three affected

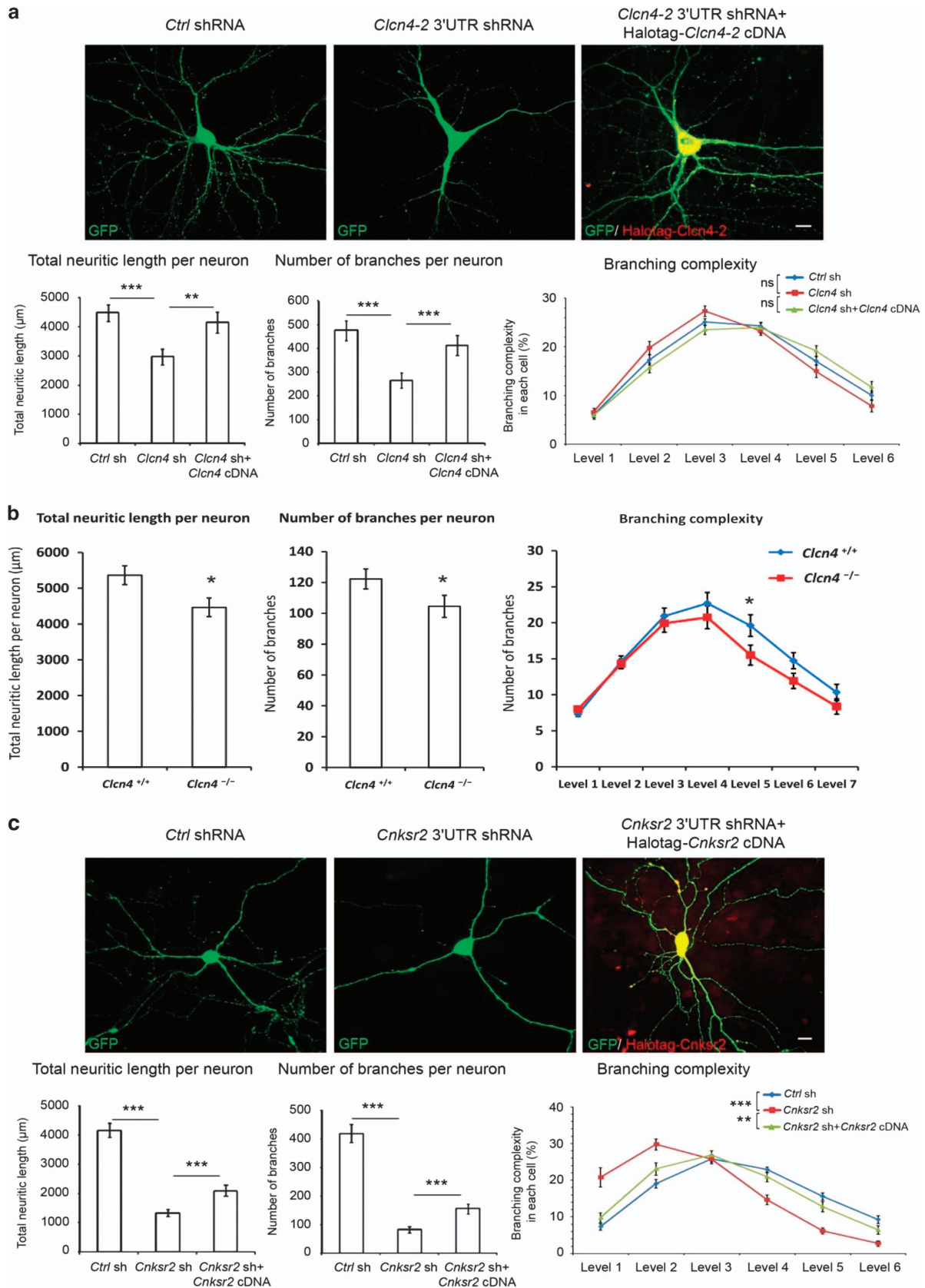


**Figure 2.** Pedigrees of families with co-segregating truncating and missense variants in novel and previously suggested candidate X-linked intellectual disability (XLID) genes validated through this study. **(a)** In the postsynaptic density protein *CNKSR2*, we observed a protein truncating variant in family P180. **(b)** In *FRMPD4*, we detected a unique protein truncating variant in family P58 with five affected males. **(c)** In *KLHL15*, we identified a protein truncating variant in family D60 with eight affected males. **(d)** In *LAS1L*, we found unique missense variants in families MRXS6 (ref. 66) and T50, both with Wilson-Turner (WTS) syndrome. **(e)** In *RLIM*, we identified missense variants in three large families D72, T11 and AU31. **(f)** In *USP27X*, we found a protein truncating variant in family D177 and a missense variant in family L75. **(g)** In the novel candidate XLID gene *CDK16*, we detected a protein truncating variant in family L56. **(h)** In the novel candidate XLID gene *TAF1*, we identified missense variants in families D185 and N67. \* = mutation carrier, wt = wild type.



brothers tested and their mother (Figure 2a). That *CNKS2* is implicated in ID is further supported by an unrelated intellectually impaired female who carries a balanced translocation with a

chromosomal breakpoint that disrupts *CNKS2* (J Chelly *et al.*, unpublished result). To assess whether the loss of the mouse ortholog, *Cnksr2*, has a functional impact, we depleted it in





primary hippocampal neurons fully differentiated *in vitro*. Reduction of *Cnksr2* had a profound effect on the number of dendritic branches, as well as on total length of neurites per neuron, which were all reduced by 65–75% (Figure 3c). These two drastic phenotypes were partially, but highly significantly rescued in neurons by expression of a shRNA-resistant cDNA plasmid encoding HaloTag-fused *Cnksr2* protein. Furthermore, dendritic branching complexity was largely affected due to loss of terminal branches (level 4 30%, level 5 50% and level 6 70%). This phenotype could be restored in the rescue experiment (Figure 3c).

In *FRMPD4* we identified a protein truncating variant (p.Cys618Valfs\*8) in a single XLID family with five affected males in different sibships (Figure 2b) and a *de novo* missense mutation in an unrelated male who at the age of 17 years presented with significant developmental delay, the absence of speech and autism spectrum disorder. His brother and a half-brother did not carry the mutation, and upon re-examination it appeared that they had much milder phenotypes characterized by learning problems at school.

In the poorly characterized *KLHL15* gene, encoding a member of the kelch-like protein family, we identified a protein-truncating variant (p.Tyr394Ilefs\*61) that co-segregates with ID in a large family with eight affected males in three different sibships (Figure 2c). Further support for *KLHL15* being implicated in XLID comes from an unrelated XLID family, which carries a small deletion that removes part of *KLHL15* and is expected to result either in a C-terminally truncated protein or in a complete loss of *KLHL15* (J Gecz, V Kalscheuer and F McKenzie *et al.*, unpublished result).

Two likely causative missense variants potentially affecting protein biosynthesis or transcription regulation involved *LAS1L*, encoding the human homolog of the highly evolutionary conserved *S. cerevisiae* protein Las1 (lethal in the absence of SSD1-v1). The p.Ala269Gly substitution was identified in the large original family described as Wilson-Turner syndrome (WTS, MIM 309585) with mild to moderate ID and obesity (Figure 2d).<sup>66</sup> More than half of the affecteds had speech disability (mutism or stuttering), small or undescended testes and relatively small feet. The p.Arg415Trp substitution was present in an unrelated family from France with five affected males in three different sibships (Figure 2d). Upon clinical re-examination of affected males from this family, they all turned out to have ID with speech impairment, obesity and hypogonadism, too.

For *RLIM*, which encodes the RING-H2 zinc finger protein 12, we identified three families who carry unique missense variants that resulted in single amino-acid substitutions (D72, p.Arg387Cys; T11/MRX61, p.Pro587Arg; AU31, p.Arg599Cys). All variants co-segregated with XLID in these large families (Figure 2e) and affected highly conserved amino-acid residues. Both p.Pro587Arg and p.Arg599Cys substitutions affect amino acids of the zinc-finger domain of *RLIM*. In addition, HOPE<sup>67</sup> predicts that the differences in amino-acid properties disturb this domain.

Family D177 with three affected males in different sibships carries a 5-bp deletion (g.AAGTA) in *USP27X* encoding ubiquitin-specific peptidase 27. The deletion was also present in their mothers (Figure 2f). The variant results in a frameshift and premature stop codon (p.Ser342Argfs\*14) that is expected to remove the C-terminal part of the corresponding protein. The unrelated family L75 with four affected males (Figure 2f) carries a potentially deleterious missense variant in *USP27X*, which substitutes a highly conserved tryptophane by a histidine residue (p.Trp381His).

#### Variants identified in novel candidate XLID genes

In *CDK16* (also frequently named in the literature as *PCTK1* and *PCTAIRE1*, [MIM 311550]), which is highly expressed in brain and testis, we identified a dinucleotide deletion in the index male of family L56. The deletion affects all three known RNA isoforms and results in a frameshift and a premature stop codon before the N-terminal kinase domain (p.Trp326Valfs\*5). The deletion was also present in his affected brother and two affected male cousins (Figure 2g) who, in addition to ID, all suffered from spastic diplegia. It is currently unclear whether another dinucleotide deletion (g.TG, chrX:47085594-47085595, p.Phe322Trpfs\*12), which would truncate the C-terminus of only one *CDK16* protein isoform (non RefSeq variant), and was identified in a single family is a rare neutral variant. *CDK16* is a poorly characterized atypical member of the cyclin-dependent kinase family. It is particularly abundant in postmitotic neurons,<sup>68</sup> and has been implicated in the regulation of neurite outgrowth,<sup>69</sup> neuronal migration, vesicular transport and exocytosis.<sup>70–72</sup> Depletion of *Cdk16* abolished dendrite development in primary neuron cultures,<sup>73</sup> and in *C. elegans* it is important for localizing presynaptic components.<sup>74</sup> Thus, it is plausible to assume that loss of *CDK16* function could have a role in ID, but more evidence is required to accept *CDK16* as a novel XLID gene.

In *TAF1* [MIM 313650] we identified segregating missense variants in two unrelated families (Figure 2h), both of which affect highly conserved amino acids of proteins encoded by the longest transcript isoforms encoding the TATA box binding protein-associated factor, 250 kD (*TAF1*), which is a subunit of a complex with a key role in transcription initiation. Additionally, *TAF1* is part of the H3K4 methyltransferase *MLL1*, which also contains *CHD8* that is implicated in autism.<sup>75,76</sup> Reduced expression of *TAF1* has been shown in brain tissues from patients with X-linked Dystonia-Parkinsonism [MIM 314250], a movement disorder endemic to the Philippines.<sup>77</sup> Furthermore, variants in *TAF2* have been associated with autosomal recessive ID.<sup>78,79</sup> Although additional evidence for *TAF1* being implicated in XLID is currently missing, these data indicate that loss of *TAF1* function could affect cognition.

**Figure 3.** Effects of *Clcn4* or *Cnksr2* downregulation on morphology of mouse hippocampal neurons. Typical arborization of GFP-labeled neurons cultured for 18 days *in vitro* (DIV) after targeting by non-silencing (NS) or gene-specific shRNA (*Clcn4* or *Cnksr2*) at 11 DIV. Quantification of transfected neurons, for total length of neuritic branches, total number of branches (a branch is considered as the segment between two branching points) and for dendritic branching complexity (levels were quantified per neuron from 1 to 6, each time a branching point is met from nucleus toward the distal part of each dendrite). Detection of co-transfections of shRNA and cDNA encoding plasmids for rescue experiments is shown as overlap of GFP (green) and Halotag (red) signals. *Clcn4* experiment is shown in (a) and *Cnksr2* in (c). More than 15 representative cells of each type were analyzed per experiment, with three independent experiments conducted. (b) Quantification of neuritic arborization in GFP expressing primary hippocampal neurons derived from *Clcn4*<sup>+/+</sup> and *Clcn4*<sup>-/-</sup> mice as described above. Two independent experiments with >30 cells per genotype of five wild-type and four knock-out mice were analyzed. *Clcn4*-deficient neurons showed a significant reduction in the total number and total length of neuritic branches compared with wild-type cells. Average values with s.e.m. are shown (i) in histograms for neuritic length and number of branches and (ii) in curves for complexity levels of branching. Mann-Whitney and Chi2 tests were respectively used for statistical comparisons (ns: non-statistically significant, \**P* < 0.05, \*\**P* < 0.01, \*\*\**P* < 0.001). Scale bar represents 10 μm.

**Table 3.** Potentially non-XLID causing recurrent and non-recurrent transcript and protein truncating variants identified in the screen and not present in controls (dbSNP 135, 1000 Genomes Project, 200 Danish exomes, NHLBI Exome Sequencing Project (ESP6500, Exome Variant Server))

Recurrence in 248 probands	Gene	Variant	Protein length	Genomic location (Hg19)
1	<i>ARSF</i>	del5bp, p.F283Sfs*30	591	X:3007551-3007555
1	<i>COL4A6</i>	del1bp, p.L891Sfs*14	1691	X:107420086-107420086
1	<i>CXorf61</i>	C>T, p.W19*	114	X:115593961-115593961
1	<i>CXorf64</i>	C>T, p.R201*	299	X:125955222-125955222
3	<i>FAM58A</i>	ins1bp, p.Q18Afs*39 <sup>a</sup>	248	X:152864477-152864478
1	<i>FATE1</i>	ins7bp, p.M38*	184	X:150885749-150885750
1	<i>FRMD7</i>	del1bp, p.L713*	715	X:131211907-131211907
1	<i>GPR112</i>	ins2bp, p.A1156Gfs*7	3081	X:135429330-135429331
1	<i>GUCY2F</i>	G>A, p.R628*	1109	X:108652307-108652307
1	<i>HDAC8</i>	A>G, p.*257QKQLPQLVFPHLHSLV	257	X:71694548-71694548
1	<i>HS6ST2</i>	del1bp, p.V8Afs*27	606	X:132092608-132092608
1	<i>MAGIX</i>	ins1bp, p.G316Rfs*20	335	X:49022676-49022677
1	<i>MAP3K15</i>	A>T, p.Y645*	1314	X:19416475-19416475
1	<i>SLC25A43</i>	C>T, p.R196*	342	X:118544221-118544221

Abbreviation: XLID, X-linked intellectual disability. <sup>a</sup>This variant is reported in dbSNP138.

#### Variants with unlikely effect on brain function

We also identified protein truncating or read-through changes in 40 genes which we considered as unlikely to cause ID because these were (i) outside the linkage intervals in the respective families and therefore expected not to co-segregate with the phenotype, (ii) did not co-segregate with ID, (iii) previously reported in healthy males<sup>3,80</sup> or (iv) involved in phenotypes distinct from ID. From these, protein truncating variants that have not been reported in controls are presented in Table 3. The *ARSF* [MIM 300003] variant is present in a family with two affected males. Other *ARSF* truncations were reported in controls.<sup>3</sup> The index patient sequenced here additionally carries a non-segregating truncating variant in *MAGIX*, but we currently cannot entirely rule out that this proband is a phenocopy. Single truncating variants in *COL4A6* [MIM 303631], *CXorf61* [MIM 300625] and *MAP3K15* [MIM 300820] are outside the linkage intervals of the respective families and therefore unlikely co-segregate with XLID in the families in which they were found. Similarly, the *GUCY2F* [MIM 300041] and *SLC25A43* [MIM 300641] truncating variants did not co-segregate with XLID in the family in which they were identified and other rare protein truncating variants were reported in ESP6500 and in other healthy male controls.<sup>81,82</sup> Furthermore, *COL4A6* is part of a contiguous gene deletion causing Alport syndrome [MIM 301050], a childhood onset progressive haematuric glomerulopathy with high-frequency sensorineural hearing loss and typical ocular signs, and for *MAP3K15* other stop-gain variants have been identified in male controls.<sup>3</sup> *CXorf64* and *FATE1* [MIM 300450] truncating variants were identified in the same family and both did not co-segregate with XLID. Variants in *FRMD7* [MIM 300628] cause idiopathic infantile nystagmus [MIM 310700]. Similarly, a non-segregating stop-gain variant in *GPR112* and a non-segregating stop-loss variant in the XLID gene *HDAC8* [MIM 300269] (Table 3) were found in a family with a co-segregating protein truncating variant in the XLID gene *UPF3B* [MIM 300298], which was considered as the cause of ID (Supplementary Table 5). For *HS6ST2* [MIM 300545], our follow-up study revealed that this deletion is recurrent and also present in a family with a pathogenic variant in the known XLID gene *KDM5C* (previously known as *JARID1C* [MIM 314690]). Similarly, other *HS6ST2* truncating variants were identified in normal males.<sup>30</sup> Furthermore, a recurrent *RAB40AL* dinucleotide missense variant (p.Asp59Gly) previously reported to cause Martin-Probst syndrome<sup>83</sup> [MIM 300519] and published as causal in an unrelated male<sup>84</sup> was identified in four unrelated index patients and did not segregate in two of the families. In another family, a protein

truncating variant was present on both X-chromosomes of healthy females, as recently reported.<sup>85</sup>

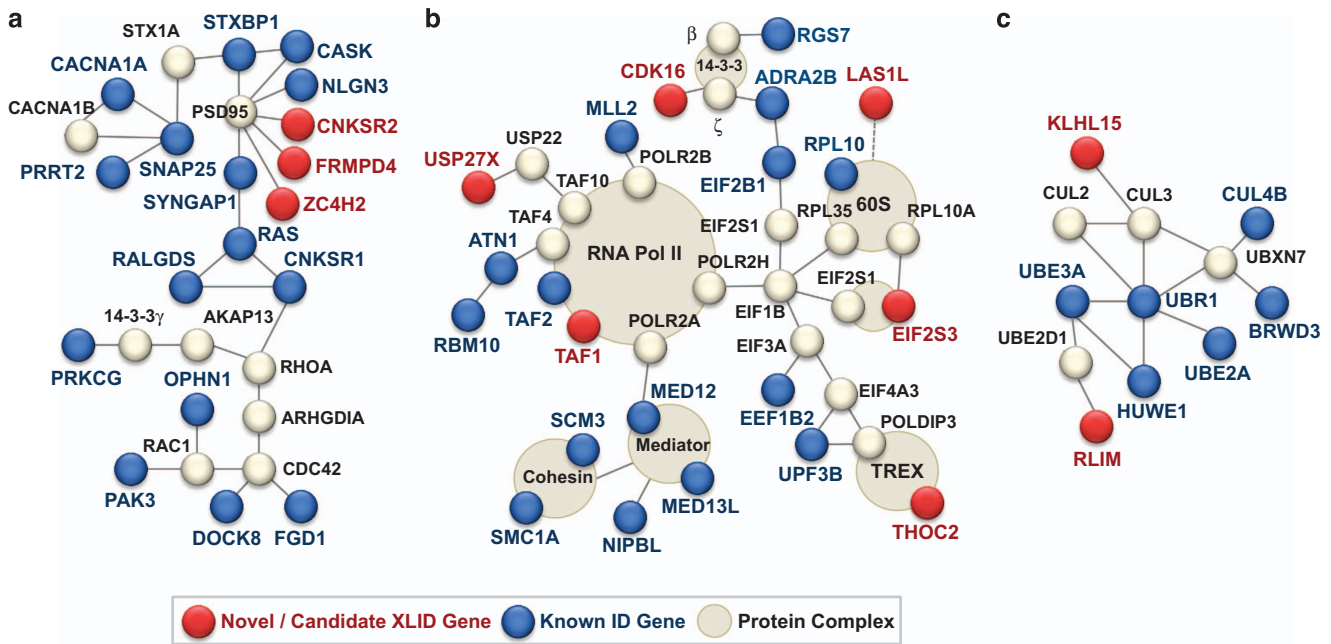
#### DISCUSSION

For many years, research into the molecular causes of ID has focused on the X-chromosome, prompted by the observation that males are more often affected than females.<sup>86,87</sup> Cumulatively, sequencing of positional and functional candidate genes as well as high-resolution array CGH led to the identification of apparently causative defects in more than 100 X-linked genes, but after the advent of high-throughput sequencing techniques, mutations inactivating some of these genes were also observed in healthy individuals, thereby questioning the identity of several of the previously identified XLID genes.<sup>43</sup>

Despite the large number of established XLID genes, more than half of the XLID families remained unsolved,<sup>2,3</sup> suggesting further heterogeneity. This prompted us to investigate a cohort of 405 XLID families by NGS. 74 (18%) of the families carry variants in established XLID genes that we consider as causative. Six families (1.5%) carry potentially causative XLID variants which, in our opinion, have to be studied in more detail before qualifying for carrier testing or prenatal diagnosis. Some of these variants are recurrent and were previously reported in other XLID families (for example, *ATRX*, *CUL4B*, *HUWE1*, for more details see our previously unpublished variants showing the respective HGMD entries in Supplementary Table 5). We did not identify any pathogenic variants in genes with an unclear role in XLID,<sup>43</sup> apart from a co-segregating missense variant identified in *ARHGEF6* [MIM 300267] the functional relevance of which remains to be established. This does not disprove a possible role of these genes in ID.

In 5% of the families, we identified likely deleterious variants in novel XLID genes and previously proposed candidate genes. In 2% of the families, mutations were observed in XLID genes that emerged from this screen and have been or will be reported in detail elsewhere, for example, *ZC4H2*,<sup>20</sup> *KIAA2022*,<sup>21</sup> *THOC2* [MIM 300395] (Kumar *et al.*, manuscript in preparation) and *EIF2S3* [MIM 300161] (manuscript in preparation). None of these variants was found in >61486 'healthy' controls except for 3 heterozygous females with RLIM protein truncating variants, and none of these genes carry loss-of-function variants in these controls (dbSNP138, ExAC Browser<sup>30,81,88-90</sup>).

One of the novel XLID genes discovered in this study is *CLCN4* in which we identified protein truncating and missense variants in five unrelated families, including families MRX15 (ref. 62) and MRX49 (ref. 61) with non-syndromic XLID. Electrophysiological



**Figure 4.** Novel X-linked intellectual disability (XLID) genes and candidates that emerged from this study encode components of key cellular protein networks. All available protein–protein interactions involving known intellectual disability (ID) proteins and the proteins likely implicated in XLID identified in this study were first extracted from the literature and then connected into a set of protein–protein interaction networks via the Ingenuity tool. Functional cellular subnetworks were extracted by using the available annotations of the interacting proteins (e.g., defined by functional category ‘translation/transcription’) and by performing literature searches. **(a)** PSD-95 (postsynaptic density protein 95)/Ras/Rho interaction network. CNKSR2 (CNK2, MAGUIN1, validated XLID protein) that likely functions as an adapter protein or regulator of Ras signaling pathways interacts with PSD-95 in synaptosomes.<sup>122</sup> FRMPD4 (Preso, validated XLID protein), which is a positive regulator of dendritic spine morphogenesis and density and is required for the maintenance of excitatory synaptic transmission, interacts with PSD-95,<sup>104</sup> and together with its binding partner ARHGEF7 ( $\beta$ Pix) localizes in dendritic growth cones.<sup>123</sup> **(b)** Transcriptional/translational interaction network. Known protein complexes are highlighted. RNA Polymerase II (RNAPII) complex with the core component TAF1 (novel candidate XLID protein). ATN1 (known ID protein) interacts with TAF4 and negatively regulates transcription of RNAPII.<sup>124</sup> Large ribosomal subunit (60S) contains RPL10 (known candidate XLID/autism protein). LAS1L (novel XLID protein) is essential for the biogenesis of the ribosomal subunit 60S.<sup>114</sup> Eukaryotic translation initiation factor, EIF2S3 (novel XLID protein), is a component of the translation initiation complex and promotes binding of the initiator methionyl-tRNA to the 40S ribosomal subunit.<sup>125</sup> POLDIP3 (SKAR), involved in positive regulation of translation, associates with THOC2 (novel XLID protein) as a part of the TREX complex (functioning in mRNA export),<sup>126</sup> with mRNA surveillance factor UPF3B (known XLID protein), as well as with a core component of the exon junction complex, EIF4A3.<sup>127</sup> CDK16 (novel candidate XLID protein) and Synapsin 1 (Syn1, known XLID protein) were shown to interact in a membrane fraction from brain.<sup>71</sup> Cdk16 associates with 14-3-3 zeta in Neuro-2A cells.<sup>69</sup> Mediator complex, which functions as a transcriptional coactivator, contains MED12 (known XLID protein) and MED13L (known ID protein). NIPBL (known ID protein) is involved in loading of cohesin and associates with the mediator-cohesin complex, which interfaces gene expression and chromatin structure. Histone methyltransferase MLL2 (known ID protein) associates with a core component of Pol II, POLR2B, and activates transcription.<sup>128</sup> Deubiquitinating enzyme USP27X (novel XLID protein) interacts with USP22 that is required for histone deubiquitination,<sup>129</sup> and which associates together with TAF10 as part of the TBP-free TAF complex (TFTC).<sup>109</sup> ADRA2B, G-protein coupled receptor, by interacting with EIF2B<sup>130</sup> and 14-3-3 zeta<sup>131</sup> links G protein-mediated signaling network and cellular control of protein synthesis. **(c)** Ubiquitination interaction network. KLHL15 (validated XLID protein) with a function in protein ubiquitination interacts with a component of an ubiquitin E3 ligase, CUL3.<sup>132</sup> RLIM (novel XLID protein) is an E3 ubiquitin protein ligase<sup>113</sup> and associates with UBE2D1.<sup>133</sup>

studies in *Xenopus laevis* oocytes showed that the amino-acid substitutions present in the affected males markedly impaired CIC-4 function and primary mouse neurons depleted of *Cln4*, the mouse counterpart of *CLCN4*. As well, primary neurons derived from *Cln4* knock-out mice showed a significant effect on neuronal differentiation thereby corroborating that CIC-4 is important for cognition. Our results further support pathogenicity of a *de novo* *CLCN4* missense variant identified in a boy with epilepsy and cognitive dysfunction.<sup>91</sup> Very little is known about the physiological role of CIC-4. It is a member of the CLC family and most homologous to CIC-3 and CIC-5. Similar to CIC-4, other members of this family are also required for normal brain function, for example, CIC-2 variants have been described in individuals with leukoencephalopathy and MRI abnormalities,<sup>92</sup> and loss of CIC-7 leads to neurodegeneration associated with lysosomal storage and osteopetrosis, respectively.<sup>93–95</sup> *Cln4*<sup>-/-</sup> mice do not display an obvious phenotype,<sup>41</sup> whereas *Cln3*<sup>-/-</sup> mice are

developmentally retarded, show neurological manifestations and severe postnatal degeneration of the hippocampus,<sup>96</sup> and *Cln6*<sup>-/-</sup> mice display lysosomal storage in neurons.<sup>97</sup> Thus, direct and indirect evidence point to a vital role for CIC proteins, including CIC-4, in the central nervous system.

Interestingly, the proteins encoded by the now confirmed XLID genes *CNKSR2* and *FRMPD4* (also termed PDZD10, PDZK10, Preso and Preso1) interact with PSD95 (Figure 4), the major scaffold protein of the postsynaptic density, which has an important role in neuronal plasticity. In *CNKSR2*, we identified a deleterious variant in a single family. This result was conducive to interpret a previously reported intragenic deletion identified in a boy with non-syndromic XLID<sup>98</sup> and of two additional *CNKSR2* gene deletions present in unrelated families.<sup>99</sup> In addition, depletion of *Cnksr2* in primary hippocampal neurons resulted in reduced number and complexity of dendritic branches. *CNKSR2* is also connected with the XLID protein *DLG3* and the ID/autism



protein SHANK3 (ref. 100) is involved in the assembly of synaptic junction components,<sup>101</sup> and modulates Rac cycling during spine morphogenesis.<sup>102</sup>

For *FRMPD4*, the first evidence for its involvement in XLID came from a duplication that likely disrupted this gene in a male with mild ID and autism.<sup>103</sup> Depletion of the *FRMPD4* ortholog in the mouse decreases spine density and excitatory synaptic transmission,<sup>104</sup> similarly to what has been described for other proteins important for normal brain function and, when deficient result in cognitive impairment.

Four of the novel and validated XLID genes are potentially directly or indirectly implicated in the regulation of protein turnover (Figure 4). One of these is *KLHL15*, in which we identified a deleterious variant in a large family and a deletion that likely affects its normal function in an unrelated family (unpublished results). Our results support pathogenicity of a partial deletion of *KLHL15*, which has very recently been described in a single proband with severe ID, epilepsy and anomalies of cortical development.<sup>105</sup> *KLHL15* is a member of the Kelch-like proteins, many of which are adaptors for the recruitment of substrates to Cul3-based E3 ubiquitin ligases for degradation by the 26S proteasome. *KLHL15*-Cul3 specifically targets a brain-specific regulatory subunit of the protein phosphatase 2A (PP2A/B $\beta$ ) and thereby promotes its proteasomal degradation, resulting in the formation of alternative PP2A holoenzymes.<sup>106</sup> PP2A/B $\beta$  has been shown to inactivate CAMKII, which is a key mediator of long-term potentiation. Thus, aberrant turnover of PP2A/B $\beta$  caused by *KLHL15* protein-truncating variants could contribute to XLID.

Little is currently known about the functional role of the ubiquitin specific peptidase USP27X. It was among the top 50 genes with enriched expression in mouse embryonic serotonin neurons and thus may be important for serotonergic function.<sup>107</sup> The only known interaction partner of USP27X is USP22, which has been shown to be required for glial cell and neuronal development in flies.<sup>108</sup> It is an integral component of a Pol II coactivator complex that, in addition to its histone acetyltransferase activity, has a role in the turnover of histone modifications by specifically removing the ubiquitin moiety from histones H2A and B, and it functions as a positive cofactor for activation by nuclear receptors.<sup>109</sup> Several previously identified ID genes code for subunits of the same complex, for example, proteins from the mediator complex, for example, MED12 and MED13L [MIM 608771], and a range of proteins that regulate transcription by modulation of the chromatin structure.<sup>110</sup> Furthermore, variants in another member of the peptidase C19 family, USP9X, are also associated with XLID.<sup>6</sup>

Three unrelated families carry co-segregating point mutations in the E3 ubiquitin ligase RLIM, which were all predicted as disease causing.<sup>111</sup> Two of the amino-acid substitutions lie in the C-terminal zinc finger domain and could disturb its function. RLIM has an important role in embryonic development by acting as a negative regulator of LIM homeodomain transcription factors through two distinct and complementary mechanisms: recruitment of the Sin3A/histone deacetylase corepressor complex and targeting the coactivator of LIM homeodomain proteins for degradation,<sup>112,113</sup> suggesting that it has critical functions in regulating associated transcriptional activity.

*LAS1L* in which we identified likely pathogenic missense variants in two families with a syndromic form of XLID (WTS,<sup>66</sup> [MIM 309585]) is involved in ribosome biogenesis. It is required for the synthesis of the 60S ribosomal subunit and maturation of 28S rRNA. Depletion of *LAS1L* results in a p53-dependent cell-cycle arrest, defective pre-rRNA processing and failure to synthesize mature 60S ribosomal subunits.<sup>114,115</sup> Additionally, *LAS1L* is part of a large nuclear complex (Five Friend of Methylated chromatin target of protein-arginine-methyltransferase-1) that has a role in transcription regulation by affecting the sumoylation status and transactivation potential of the zinc-finger transcription factor

Zbp-89,<sup>116,117</sup> and is a component of the CoREST1/HDAC1 corepressor complex.<sup>117</sup> It remains to be determined which of the *LAS1L* functions are compromised by the missense variants. Interestingly, another missense variant in this gene has recently been identified in a boy with congenital lethal motor neuron disease,<sup>118</sup> suggesting that *LAS1L* variants are associated with a variable phenotype. Similarly, a family with a phenotype resembling WTS carries a missense variant in the known XLID gene *HDAC8*,<sup>119</sup> in which loss-of-function variants are associated with Cornelia de Lange syndrome (CDLS5 [MIM 300882]).<sup>12</sup>

Our investigation has led to the identification of several novel ID genes that are mutated in up to 7% of the XLID families. There are still many ID families with evidence for X-linkage that remain unresolved, including 75 families with 4 and more affected males in separate sibships connected through female carriers, suggesting several yet to be identified genes or loci on the X-chromosome involved in ID. The 'diagnostic' yield of 26% obtained by performing X-exome resequencing on a pre-screened cohort contrasts with our previous experience that defects in XLID genes known until 2007 account for more than half of the families screened.<sup>2</sup> This discrepancy can be explained by the fact that in the present study, most of the families had already undergone prior FraX testing, array CGH and targeted analysis of many previously known genes. Indeed, *KDMS5C* variants and disease-causing variants in three other most common XLID genes, namely *MECP2* [MIM 300005], *IL1RAPL1* [MIM 300206] and *PQBP1*, turned out to be strongly under-represented in the families included here (Supplementary Table 10). To estimate the diagnostic yield of sequencing all X-chromosomal exons in novel, not previously examined XLID families, we selected 222 EUROMRX consortium families with convincing evidence for X-linkage, as evidenced by two or more affected males in two generations connected through healthy female carriers. In all, 97 of these 222 families had been resolved by mutation screening of single genes or by array CGH before this study (unpublished results).<sup>2</sup> Of the remaining 125 families, 32 could be solved and 3 potentially solved by NGS-based sequencing of all X-chromosomal genes, but 90 remained unsolved, with half of them having four or more affected males in separate sibships. Assuming that we would have detected all previously identified defects by NGS, this indicates that mutations in coding regions of all presently known XLID genes account for 58% of the (EUROMRX) Fragile X-negative families (Supplementary Figure 9). Combined with Fragile X, which is seen in about 15% of XLID families, NGS and Fragile X testing allows a molecular diagnosis in 64% of all families with XLID (Supplementary Figure 10).

There are several explanations why about one-third of all XLID families cannot be solved by Fragile X testing combined with X-exome sequencing, (1) technical limitations because of poor enrichment and coverage that may account for a small number of the families, (2) non-coding variants or yet to be annotated regions of X-chromosome, (3) also, it is rather likely that at least some of the families might have autosomal ID instead of XLID, (4) the unique DNA missense variants with currently unknown causality are pathogenic, (5) at least some of the cases might be due to multigenic variations, or (6) deleterious variants are located in yet undiscovered regulatory elements. Although there is no reliable information about the proportion of disease-causing mutations located outside coding exons, their frequency may be considerable. A recent effort to annotate the non-coding sequence showed that around 80% of the genome contains elements linked to a biochemical function.<sup>120</sup> Nowadays, whole genome sequencing or targeted genomic sequencing of linkage intervals combined with sophisticated computational tools that predict such potentially functionally relevant sequences, in principle, allow finding disease-relevant variants outside coding exons. One example is a family with non-syndromic XLID in which we failed to identify the causative mutation by exome sequencing.



Subsequent massively parallel resequencing of the non-repetitive genomic linkage interval identified a regulatory variant that leads to overexpression of the transcriptional regulator HCFC1.<sup>7</sup> Though the numbers of non-coding sequences in the human genome are comparably large, interpreting non-protein coding variants is a new challenge for the next years.

In conclusion, we have been able to identify numerous pathogenic variants in known XLID genes, previously proposed and novel XLID genes and two XLID candidates. The results provide a molecular diagnosis for the families involved and will be useful for interpreting variants that will be identified in other patients and families in these genes in the future. It will also help to better understand the genetic complexity underlying ID and the functional complexity underlying normal brain function, which is amazingly diverse. There is a growing body of evidence demonstrating that genetic lesions identified in XLID genes are also associated with other brain/neurological disorders, many of these often co-occurring with ID including autism, epilepsy, schizophrenia or other neuropsychiatric and neurobehavioral problems. Therefore, further investigations of the XLID genes in the context of their functional and regulatory networks will not only deepen our insight into the pathogenesis of ID but also shed more light into the etiology of related neurological disorders and into human brain development.

#### CONFLICT OF INTEREST

The authors declare no conflict of interest.

#### ACKNOWLEDGMENTS

We thank all the families who participated in this research. We also thank Susanne Freier, Ines Müller, Rien Blok, Carolien Oosterhoud, Roel Brandts, Demis Tserpelis, Evelyn Douglas, Lynne Hobson, Pia Winter and Sara Ekvall for excellent technical assistance; Dagmar Wiczorek, Vincent Desportes, Jean-Paul Bonnefont, Valerie Biancalana, Daniel Amram, Stanislas Lyonnet, Jacqueline Vigneron, Veronica Cusin, Philippe Jonveaux, Laurence-Olivier Faivre, Lydie Burglen, Yves Alembik, Sophie Scheidecker, Aurelia Jacqueline, Delphine Heron, Cyril Goizet, Marie Ange Delrue, Didier Lacombe, Odile Boute, Andre Megarbane, Anne Moncla, Brigitte Gilbert Tiong Tan, Sharron Townshend, Michael Gabbett, Zornitza Stark, Mac Gardner, Joanne Dixon, Ian Glass, Martin Delatycki, Salim Aftimos, Felicity Collins, Paul James, George McGillivray, Kate Pope, Judith Allanson, Claude Moraine, Christine Francannet, Annick Toutain, James Lespinasse, Brigitte Gilbert, Isabelle Mortemousseque, Anne Moncla, Etienne Mornet, Albert David, Connie Schrandner-Stumpel, Christine de Die-Smulders, Yvonne Arens, Eric Smeets, Dominique Marcus-Soekarman, Ute Moog, Bert Smeets, Marzena Wiśniewska, Renata Glazar, Maciej Robert Krawczyński, Barbara Leube, Magdalena Nawara, Agnieszka Charzewska, Irma Järvelä, Barbara Oehl-Jaschkowitz, Marco Henneke, Peter Propping, Gholamali Tariverdian, Almuth Caliebe, Dorothea Wand, Jürgen Mücke, Eva Seemanova, Birgit Zirn, Jörg Müsebeck, Rudolf Mallmann, Christiane Zweier, Rami Abou Jamra and Anita Rauch for contributing families with XLID. We would like to thank the Exome Aggregation Consortium and the groups that provided exome variant data for comparison. A full list of contributing groups can be found at <http://exac.broadinstitute.org/about>. This work was financed by a grant of the German Ministry of Education and Research through the MRNET (to HHR); the EU FP7 project GENCODYS, grant number 241995; the Max Planck Innovation Funds (to HHR), NWO VENI grant: 91666017 to SGMF, grant 2009(2)-81 from the Dutch Brain Foundation to AdB, WCH Foundation and Australian NHMRC to JG, grant from Fondation pour la Recherche Médicale (FRM, J Chelly-Equipe FRM 2013: DEQ2000326477).

#### Web Resources

1000 Genomes Project Consortium, <http://www.1000genomes.org/data>.  
SplazerS, <http://www.seqan.de/projects/splazers.html>.  
SnpStore, <http://www.seqan.de/projects/snpstore.html>.  
Online Mendelian Inheritance in Man (OMIM), <http://www.ncbi.nlm.nih.gov/omim>.  
PolyPhen2, <http://genetics.bwh.harvard.edu/pph2/>.  
SIFT, <http://sift.jcvi.org/>.  
NHLBI Exome Variant Server (ESP6500), <http://evs.gs.washington.edu/EVS/>.  
dbSNP135, dbSNP138, <http://www.ncbi.nlm.nih.gov/snp>.  
Ingenuity tool, <http://www.ingenuity.com>.  
HOPE server, <http://www.cmbi.ru.nl/hope/home>.  
shRNA designer tools, <http://france.promega.com/resources/tools/>.

Decipher, <http://decipher.sanger.ac.uk/>.  
RNAi Consortium (TCR) shRNA Library, <http://www.broadinstitute.org/rnai/trc/lib>.  
MutationTaster, <http://www.mutationtaster.org/>.  
The Human Gene Mutation Database, <http://www.hgmd.org/>.  
Exome Aggregation Consortium (ExAC), Cambridge, MA, <http://exac.broadinstitute.org/>. [November, 2014 accessed].

#### REFERENCES

- 1 Ropers HH, Hamel BC. X-linked mental retardation. *Nat Rev Genet* 2005; **6**: 46–57.
- 2 de Brouwer AP, Yntema HG, Kleefstra T, Lugtenberg D, Oudakker AR, de Vries BB *et al*. Mutation frequencies of X-linked mental retardation genes in families from the EuroMRX consortium. *Hum Mutat* 2007; **28**: 207–208.
- 3 Tarpey PS, Smith R, Pleasance E, Whibley A, Edkins S, Hardy C *et al*. A systematic, large-scale resequencing screen of X-chromosome coding exons in mental retardation. *Nat Genet* 2009; **41**: 535–543.
- 4 Whibley AC, Plagnol V, Tarpey PS, Abidi F, Fullston T, Choma MK *et al*. Fine-scale survey of X chromosome copy number variants and indels underlying intellectual disability. *Am J Hum Genet* 2010; **87**: 173–188.
- 5 Shoubridge C, Tarpey PS, Abidi F, Ramsden SL, Rujirabanjerd S, Murphy JA *et al*. Mutations in the guanine nucleotide exchange factor gene IQSEC2 cause non-syndromic intellectual disability. *Nat Genet* 2010; **42**: 486–488.
- 6 Homan CC, Kumar R, Nguyen LS, Haan E, Raymond FL, Abidi F *et al*. Mutations in USP9X are associated with X-linked intellectual disability and disrupt neuronal cell migration and growth. *Am J Hum Genet* 2014; **94**: 470–478.
- 7 Huang L, Jolly LA, Willis-Owen S, Gardner A, Kumar R, Douglas E *et al*. A non-coding, regulatory mutation implicates HCFC1 in nonsyndromic intellectual disability. *Am J Hum Genet* 2012; **91**: 694–702.
- 8 Froyen G, Corbett M, Vandewalle J, Jarvela I, Lawrence O, Meldrum C *et al*. Submicroscopic duplications of the hydroxysteroid dehydrogenase HSD17B10 and the E3 ubiquitin ligase HUWE1 are associated with mental retardation. *Am J Hum Genet* 2008; **82**: 432–443.
- 9 Gilfillan GD, Selmer KK, Roxrud I, Smith R, Kyllerman M, Eiklid K *et al*. SLC9A6 mutations cause X-linked mental retardation, microcephaly, epilepsy, and ataxia, a phenotype mimicking Angelman syndrome. *Am J Hum Genet* 2008; **82**: 1003–1010.
- 10 Dibbens LM, Tarpey PS, Hynes K, Bayly MA, Scheffer IE, Smith R *et al*. X-linked protocadherin 19 mutations cause female-limited epilepsy and cognitive impairment. *Nat Genet* 2008; **40**: 776–781.
- 11 Giannandrea M, Bianchi V, Mignogna ML, Sirri A, Carrabino S, D'Elia E *et al*. Mutations in the small GTPase gene RAB39B are responsible for X-linked mental retardation associated with autism, epilepsy, and macrocephaly. *Am J Hum Genet* 2010; **86**: 185–195.
- 12 Deardorff MA, Bando M, Nakato R, Watrin E, Itoh T, Minamino M *et al*. HDAC8 mutations in Cornelia de Lange syndrome affect the cohesin acetylation cycle. *Nature* 2012; **489**: 313–317.
- 13 Yu HC, Sloan JL, Scharer G, Brebner A, Quintana AM, Achilly NP *et al*. An X-linked cobalamin disorder caused by mutations in transcriptional coregulator HCFC1. *Am J Hum Genet* 2013; **93**: 506–514.
- 14 Starokadomskyy P, Gluck N, Li H, Chen B, Wallis M, Maine GN *et al*. CCDC22 deficiency in humans blunts activation of proinflammatory NF- $\kappa$ B signaling. *J Clin Invest* 2013; **123**: 2244–2256.
- 15 Voineagu I, Huang L, Winden K, Lazarov M, Haan E, Nelson J *et al*. CCDC22: a novel candidate gene for syndromic X-linked intellectual disability. *Mol Psychiatry* 2012; **17**: 4–7.
- 16 Johnston JJ, Gropman AL, Sapp JC, Teer JK, Martin JM, Liu CF *et al*. The phenotype of a germline mutation in PIGA: the gene somatically mutated in paroxysmal nocturnal hemoglobinuria. *Am J Hum Genet* 2012; **90**: 295–300.
- 17 Hayflick SJ, Kruer MC, Gregory A, Haack TB, Kurian MA, Houlden HH *et al*. beta-Propeller protein-associated neurodegeneration: a new X-linked dominant disorder with brain iron accumulation. *Brain* 2013; **136**: 1708–1717.
- 18 Lederer D, Grisart B, Digilio MC, Benoit V, Crespin M, Ghariani SC *et al*. Deletion of KDM6A, a histone demethylase interacting with MLL2, in three patients with Kabuki syndrome. *Am J Hum Genet* 2012; **90**: 119–124.
- 19 Cacciagli P, Suter-Sardo J, Borges-Correia A, Roux JC, Dorboz I, Desvignes JP *et al*. Mutations in BCAP31 cause a severe X-linked phenotype with deafness, dystonia, and central hypomyelination and disorganize the Golgi apparatus. *Am J Hum Genet* 2013; **93**: 579–586.
- 20 Hirata H, Nanda I, van Riesen A, McMichael G, Hu H, Hambrock M *et al*. ZC4H2 mutations are associated with arthrogyposis multiplex congenita and intellectual disability through impairment of central and peripheral synaptic plasticity. *Am J Hum Genet* 2013; **92**: 681–695.
- 21 Van Maldergem L, Hou Q, Kalscheuer VM, Rio M, Doco-Fenzy M, Medeira A *et al*. Loss of function of KIAA2022 causes mild to severe intellectual disability with an

- autism spectrum disorder and impairs neurite outgrowth. *Hum Mol Genet* 2013; **22**: 3306–3314.
- 22 Geetha TS, Michealraj KA, Kabra M, Kaur G, Juyal RC, Thelma BK. Targeted deep resequencing identifies MID2 mutation for X-linked intellectual disability with varied disease severity in a large kindred from India. *Hum Mutat* 2014; **35**: 41–44.
- 23 Hu CH, Wrogemann K, Kalscheuer V, Tzschach A, Richard H, Haas SA et al. Mutation screening in 86 known X-linked mental retardation genes by droplet-based multiplex PCR and massive parallel sequencing. *Hugo J* 2009; **3**: 41–49.
- 24 Weese D, Emde AK, Rausch T, Doring A, Reinert K. RazerS—fast read mapping with sensitivity control. *Genome Res* 2009; **19**: 1646–1654.
- 25 Emde AK, Schulz MH, Weese D, Sun R, Vingron M, Kalscheuer VM et al. Detecting genomic indel variants with exact breakpoints in single- and paired-end sequencing data using SplazerS. *Bioinformatics* 2012; **28**: 619–627.
- 26 Love MI, Mysickova A, Sun R, Kalscheuer V, Vingron M, Haas SA. Modeling read counts for CNV detection in exome sequencing data. *Stat Appl Genet Mol Biol* 2010; **10**: 1544–6115.
- 27 Li H, Ruan J, Durbin R. Mapping short DNA sequencing reads and calling variants using mapping quality scores. *Genome Res* 2008; **18**: 1851–1858.
- 28 Hu H, Wienker TF, Musante L, Kalscheuer VM, Kahrizi K, Najmabadi H et al. Integrated sequence analysis pipeline provides one-stop solution for identifying disease-causing mutations. *Hum Mutat* 2014; **35**: 1427–1435.
- 29 Li R, Yu C, Li Y, Lam TW, Yiu SM, Kristiansen K et al. SOAP2: an improved ultrafast tool for short read alignment. *Bioinformatics* 2009; **25**: 1966–1967.
- 30 Li Y, Vinckenbosch N, Tian G, Huerta-Sanchez E, Jiang T, Jiang H et al. Resequencing of 200 human exomes identifies an excess of low-frequency non-synonymous coding variants. *Nat Genet* 2010; **42**: 969–972.
- 31 Pollard KS, Hubisz MJ, Rosenbloom KR, Siepel A. Detection of nonneutral substitution rates on mammalian phylogenies. *Genome Res* 2010; **20**: 110–121.
- 32 Reese MG, Eeckman FH, Kulp D, Haussler D. Improved splice site detection in Genie. *J Comput Biol* 1997; **4**: 311–323.
- 33 Adzhubei IA, Schmidt S, Peshkin L, Ramensky VE, Gerasimova A, Bork P et al. A method and server for predicting damaging missense mutations. *Nat Methods* 2010; **7**: 248–249.
- 34 Kumar P, Henikoff S, Ng PC. Predicting the effects of coding non-synonymous variants on protein function using the SIFT algorithm. *Nat Protoc* 2009; **4**: 1073–1081.
- 35 Kircher M, Witten DM, Jain P, O’Roak BJ, Cooper GM, Shendure J. A general framework for estimating the relative pathogenicity of human genetic variants. *Nat Genet* 2014; **46**: 310–315.
- 36 Friedrich T, Breiderhoff T, Jentsch TJ. Mutational analysis demonstrates that CIC-4 and CIC-5 directly mediate plasma membrane currents. *J Biol Chem* 1999; **274**: 896–902.
- 37 Lorenz C, Pusch M, Jentsch TJ. Heteromultimeric CLC chloride channels with novel properties. *Proc Natl Acad Sci USA* 1996; **93**: 13362–13366.
- 38 Kaech S, Banker G. Culturing hippocampal neurons. *Nat Protoc* 2006; **1**: 2406–2415.
- 39 Beaudoin GM 3rd, Lee SH, Singh D, Yuan Y, Ng YG, Reichardt LF et al. Culturing pyramidal neurons from the early postnatal mouse hippocampus and cortex. *Nat Protoc* 2012; **7**: 1741–1754.
- 40 Nadif Kasri N, Nakano-Kobayashi A, Malinow R, Li B, Van Aelst L. The Rho-linked mental retardation protein oligophrenin-1 controls synapse maturation and plasticity by stabilizing AMPA receptors. *Genes Dev* 2009; **23**: 1289–1302.
- 41 Rickheit G, Wartosch L, Schaffer S, Stobrawa SM, Novarino G, Weinert S et al. Role of CIC-5 in renal endocytosis is unique among CLC exchangers and does not require PY-motif-dependent ubiquitylation. *J Biol Chem* 2010; **285**: 17595–17603.
- 42 Stauber T, Jentsch TJ. Sorting motifs of the endosomal/lysosomal CLC chloride transporters. *J Biol Chem* 2010; **285**: 34537–34548.
- 43 Piton A, Redin C, Mandel JL. XLID-causing mutations and associated genes challenged in light of data from large-scale human exome sequencing. *Am J Hum Genet* 2013; **93**: 368–383.
- 44 Piton A, Poquet H, Redin C, Masurel A, Lauer J, Muller J et al. 20 ans apres: a second mutation in MAOA identified by targeted high-throughput sequencing in a family with altered behavior and cognition. *Eur J Hum Genet* 2014; **22**: 776–783.
- 45 Lesca G, Moizard MP, Bussy G, Boggio D, Hu H, Haas SA et al. Clinical and neurocognitive characterization of a family with a novel MED12 gene frameshift mutation. *Am J Med Genet A* 2013; **161A**: 3063–3071.
- 46 Philips AK, Siren A, Avela K, Somer M, Peippo M, Ahvenainen M et al. X-exome sequencing in Finnish families with intellectual disability—four novel mutations and two novel syndromic phenotypes. *Orphanet J Rare Dis* 2014; **9**: 49.
- 47 Haddad DM, Vilain S, Vos M, Esposito G, Matta S, Kalscheuer VM et al. Mutations in the intellectual disability gene Ube2a cause neuronal dysfunction and impair parkin-dependent mitophagy. *Mol Cell* 2013; **50**: 831–843.
- 48 Masurel-Paulet A, Kalscheuer VM, Lebrun N, Hu H, Levy F, Thauvin-Robinet C et al. Expanding the clinical phenotype of patients with a ZDHHC9 mutation. *Am J Med Genet A* 2014; **164A**: 789–795.
- 49 Strobl-Wildemann G, Kalscheuer VM, Hu H, Wrogemann K, Ropers HH, Tzschach A. Novel GDI1 mutation in a large family with nonsyndromic X-linked intellectual disability. *Am J Med Genet A* 2011; **155A**: 3067–3070.
- 50 Vulto-van Silfhout AT, Nakagawa T, Bahi-Buisson N, Haas SA, Hu H, Bienek M et al. Variants in CUL4B are associated with cerebral malformations. *Hum Mutat* 2014; **36**: 106–117.
- 51 Meloni I, Muscettola M, Raynaud M, Longo I, Bruttini M, Moizard MP et al. *FACL4*, encoding fatty acid-CoA ligase 4, is mutated in nonspecific X-linked mental retardation. *Nat Genet* 2002; **30**: 436–440.
- 52 Longo I, Frints SG, Fryns JP, Meloni I, Pescucci C, Ariani F et al. A third MRX family (MRX68) is the result of mutation in the long chain fatty acid-CoA ligase 4 (*FACL4*) gene: proposal of a rapid enzymatic assay for screening mentally retarded patients. *J Med Genet* 2003; **40**: 11–17.
- 53 Yonath H, Marek-Yagel D, Resnik-Wolf H, Abu-Horvitz A, Baris HN, Shohat M et al. X inactivation testing for identifying a non-syndromic X-linked mental retardation gene. *J Appl Genet* 2011; **52**: 437–441.
- 54 Jamain S, Quach H, Betancur C, Rastam M, Colineaux C, Gillberg IC et al. Mutations of the X-linked genes encoding neurologins NLGN3 and NLGN4 are associated with autism. *Nat Genet* 2003; **34**: 27–29.
- 55 Jiang YH, Yuen RK, Jin X, Wang M, Chen N, Wu X et al. Detection of clinically relevant genetic variants in autism spectrum disorder by whole-genome sequencing. *Am J Hum Genet* 2013; **93**: 249–263.
- 56 Mikhailov A, Fennell A, Plong-on O, Sriro T, Hansakunachai T, Roongpraiwan R et al. Screening of NLGN3 and NLGN4X genes in Thai children with autism spectrum disorder. *Psychiatr Genet* 2014; **24**: 42–43.
- 57 Schwartz CE, Tarpey PS, Lubs HA, Verloes A, May MM, Risheg H et al. The original Lujan syndrome family has a novel missense mutation (p.N1007S) in the MED12 gene. *J Med Genet* 2007; **44**: 472–477.
- 58 Risheg H, Graham JM Jr., Clark RD, Rogers RC, Opitz JM, Moeschler JB et al. A recurrent mutation in MED12 leading to R961W causes Opitz-Kaveggia syndrome. *Nat Genet* 2007; **39**: 451–453.
- 59 Vulto-van Silfhout AT, de Vries BB, van Bon BW, Hoischen A, Ruiterskamp-Versteeg M, Gilissen C et al. Mutations in MED12 cause X-linked Ohdo syndrome. *Am J Hum Genet* 2013; **92**: 401–406.
- 60 Scheel O, Zdebek AA, Lourdel S, Jentsch TJ. Voltage-dependent electrogenic chloride/proton exchange by endosomal CLC proteins. *Nature* 2005; **436**: 424–427.
- 61 Claes S, Vogels A, Holvoet M, Devriendt K, Raeymaekers P, Cassiman JJ et al. Regional localization of two genes for nonspecific X-linked mental retardation to Xp22.3-p22.2 (MRX49) and Xp11.3-p11.21 (MRX50). *Am J Med Genet* 1997; **73**: 474–479.
- 62 Raynaud M, Gendrot C, Dessay B, Moncla A, Ayrault AD, Moizard MP et al. X-linked mental retardation with neonatal hypotonia in a French family (MRX15): gene assignment to Xp11.22-Xp21.1. *Am J Med Genet* 1996; **64**: 97–106.
- 63 Feng L, Campbell EB, Hsiung Y, MacKinnon R. Structure of a eukaryotic CLC transporter defines an intermediate state in the transport cycle. *Science* 2010; **330**: 635–641.
- 64 Estévez R, Pusch M, Ferrer-Costa C, Orozco M, Jentsch TJ. Functional and structural conservation of CBS domains from CLC chloride channels. *J Physiol* 2004; **557**: 363–378.
- 65 Bykova EA, Zhang XD, Chen TY, Zheng J. Large movement in the C terminus of CLC-0 chloride channel during slow gating. *Nat Struct Mol Biol* 2006; **13**: 1115–1119.
- 66 Wilson M, Mulley J, Gedeon A, Robinson H, Turner G. New X-linked syndrome of mental retardation, gynecomastia, and obesity is linked to DXS255. *Am J Med Genet* 1991; **40**: 406–413.
- 67 Venselaar H, Te Beek TA, Kuipers RK, Hekkelman ML, Vriend G. Protein structure analysis of mutations causing inheritable diseases. An e-Science approach with life scientist friendly interfaces. *BMC Bioinformatics* 2010; **11**: 548.
- 68 Besset V, Rhee K, Wolgemuth DJ. The cellular distribution and kinase activity of the Cdk family member Pctaire1 in the adult mouse brain and testis suggest functions in differentiation. *Cell Growth Differ* 1999; **10**: 173–181.
- 69 Graeser R, Gannon J, Poon RY, Dubois T, Aitken A, Hunt T. Regulation of the CDK-related protein kinase PCTAIRE-1 and its possible role in neurite outgrowth in Neuro-2A cells. *J Cell Sci* 2002; **115**: 3479–3490.
- 70 Fu WY, Cheng K, Fu AK, Ip NY. Cyclin-dependent kinase 5-dependent phosphorylation of Pctaire1 regulates dendrite development. *Neuroscience* 2011; **180**: 353–359.
- 71 Liu Y, Cheng K, Gong K, Fu AK, Ip NY. Pctaire1 phosphorylates N-ethylmaleimide-sensitive fusion protein: implications in the regulation of its hexamerization and exocytosis. *J Biol Chem* 2006; **281**: 9852–9858.

- 72 Cheng K, Li Z, Fu WY, Wang JH, Fu AK, Ip NY. Pctaire1 interacts with p35 and is a novel substrate for Cdk5/p35. *J Biol Chem* 2002; **277**: 31988–31993.
- 73 Mokalled MH, Johnson A, Kim Y, Oh J, Olson EN. Myocardin-related transcription factors regulate the Cdk5/Pctaire1 kinase cascade to control neurite outgrowth, neuronal migration and brain development. *Development* 2010; **137**: 2365–2374.
- 74 Ou CY, Poon VY, Maeder CI, Watanabe S, Lehrman EK, Fu AK *et al*. Two cyclin-dependent kinase pathways are essential for polarized trafficking of presynaptic components. *Cell* 2010; **141**: 846–858.
- 75 Neale BM, Kou Y, Liu L, Ma'ayan A, Samocha KE, Sabo A *et al*. Patterns and rates of exonic *de novo* mutations in autism spectrum disorders. *Nature* 2012; **485**: 242–245.
- 76 O'Roak BJ, Deriziotis P, Lee C, Vives L, Schwartz JJ, Girirajan S *et al*. Exome sequencing in sporadic autism spectrum disorders identifies severe *de novo* mutations. *Nat Genet* 2011; **43**: 585–589.
- 77 Makino S, Kaji R, Ando S, Tomizawa M, Yasuno K, Goto S *et al*. Reduced neuron-specific expression of the TAF1 gene is associated with X-linked dystonia-parkinsonism. *Am J Hum Genet* 2007; **80**: 393–406.
- 78 Najmabadi H, Hu H, Garshasbi M, Zemojtel T, Abedini SS, Chen W *et al*. Deep sequencing reveals 50 novel genes for recessive cognitive disorders. *Nature* 2011; **478**: 57–63.
- 79 Hellman-Aharony S, Smirin-Yosef P, Halevy A, Pasmanik-Chor M, Yeheskel A, Har-Zahav A *et al*. Microcephaly thin corpus callosum intellectual disability syndrome caused by mutated TAF2. *Pediatr Neurol* 2013; **49**: 411–416 e411.
- 80 Piton A, Gauthier J, Hamdan FF, Lafreniere RG, Yang Y, Henrion E *et al*. Systematic resequencing of X-chromosome synaptic genes in autism spectrum disorder and schizophrenia. *Mol Psychiatry* 2011; **16**: 867–880.
- 81 Lim ET, Raychaudhuri S, Sanders SJ, Stevens C, Sabo A, MacArthur DG *et al*. Rare complete knockouts in humans: population distribution and significant role in autism spectrum disorders. *Neuron* 2013; **77**: 235–242.
- 82 Vandewalle J, Bauters M, Van Esch H, Belet S, Verbeeck J, Fieremans N *et al*. The mitochondrial solute carrier SLC25A5 at Xq24 is a novel candidate gene for non-syndromic intellectual disability. *Hum Genet* 2013; **132**: 1177–1185.
- 83 Bedoyan JK, Schaibley VM, Peng W, Bai Y, Mondal K, Shetty AC *et al*. Disruption of RAB40AL function leads to Martin-Probst syndrome, a rare X-linked multisystem neurodevelopmental human disorder. *J Med Genet* 2012; **49**: 332–340.
- 84 Lee J, Wong S, Boles RG. Mutation in the X-linked RAB40AL gene (Martin-Probst syndrome) with mental retardation, sensorineural hearing loss, and anomalies of the craniofacial and genitourinary tract: a second case report. *Eur J Pediatr* 2014; **173**: 967–969.
- 85 Iqbal Z, Hu H, Haas SA, Shaw M, Lebrun N, Seemanova E *et al*. RAB40AL loss-of-function mutation does not cause X-linked intellectual disability. *J Med Genet* 2013; **49**: 332.
- 86 Lehrke R. Theory of X-linkage of major intellectual traits. *Am J Ment Defic* 1972; **76**: 611–619.
- 87 Lehrke RG. X-linked mental retardation and verbal disability. *Birth Defects Orig Artic Ser* 1974; **10**: 1–100.
- 88 Sanders SJ, Murtha MT, Gupta AR, Murdoch JD, Raubeson MJ, Willsey AJ *et al*. *De novo* mutations revealed by whole-exome sequencing are strongly associated with autism. *Nature* 2012; **485**: 237–241.
- 89 Iossifov I, Ronemus M, Levy D, Wang Z, Hakker I, Rosenbaum J *et al*. *De novo* gene disruptions in children on the autistic spectrum. *Neuron* 2012; **74**: 285–299.
- 90 MacArthur DG, Balasubramanian S, Frankish A, Huang N, Morris J, Walter K *et al*. A systematic survey of loss-of-function variants in human protein-coding genes. *Science* 2012; **335**: 823–828.
- 91 Veeramah KR, Johnstone L, Karafet TM, Wolf D, Sprissler R, Salogiannis J *et al*. Exome sequencing reveals new causal mutations in children with epileptic encephalopathies. *Epilepsia* 2013; **54**: 1270–1281.
- 92 Depienne C, Bugiani M, Dupuits C, Galanaud D, Toutiou V, Postma N *et al*. Brain white matter oedema due to CIC-2 chloride channel deficiency: an observational analytical study. *Lancet Neurol* 2013; **12**: 659–668.
- 93 Kornak U, Kasper D, Bosl MR, Kaiser E, Schweizer M, Schulz A *et al*. Loss of the CIC-7 chloride channel leads to osteopetrosis in mice and man. *Cell* 2001; **104**: 205–215.
- 94 Kasper D, Planells-Cases R, Fuhrmann JC, Scheel O, Zeitz O, Ruether K *et al*. Loss of the chloride channel CIC-7 leads to lysosomal storage disease and neurodegeneration. *EMBO J* 2005; **24**: 1079–1091.
- 95 Frattini A, Pangrazio A, Susani L, Sobacchi C, Mirolo M, Abinun M *et al*. Chloride channel CICN7 mutations are responsible for severe recessive, dominant, and intermediate osteopetrosis. *J Bone Miner Res* 2003; **18**: 1740–1747.
- 96 Stobrawa SM, Breiderhoff T, Takamori S, Engel D, Schweizer M, Zdebek AA *et al*. Disruption of CIC-3, a chloride channel expressed on synaptic vesicles, leads to a loss of the hippocampus. *Neuron* 2001; **29**: 185–196.
- 97 Poet M, Kornak U, Schweizer M, Zdebek AA, Scheel O, Hoelter S *et al*. Lysosomal storage disease upon disruption of the neuronal chloride transport protein CIC-6. *Proc Natl Acad Sci USA* 2006; **103**: 13854–13859.
- 98 Houge G, Rasmussen IH, Hovland R. Loss-of-function CNKSR2 mutation is a likely cause of non-syndromic X-linked intellectual disability. *Mol Syndromol* 2012; **2**: 60–63.
- 99 Vaags AK, Bowdin S, Smith ML, Gilbert-Dussardier B, Brocke-Holmeffjord KS, Sinopoli K *et al*. Absent CNKSR2 causes seizures and intellectual, attention, and language deficits. *Ann Neurol* 2014; **76**: 758–764.
- 100 Stiffler MA, Grantcharova VP, Sevecka M, MacBeath G. Uncovering quantitative protein interaction networks for mouse PDZ domains using protein microarrays. *J Am Chem Soc* 2006; **128**: 5913–5922.
- 101 Ohtakara K, Nishizawa M, Izawa I, Hata Y, Matsushima S, Taki W *et al*. Densin-180, a synaptic protein, links to PSD-95 through its direct interaction with MAGUIIN-1. *Genes Cells* 2002; **7**: 1149–1160.
- 102 Lim J, Ritt DA, Zhou M, Morrison DK. The CNK2 scaffold interacts with vils and modulates Rac cycling during spine morphogenesis in hippocampal neurons. *Curr Biol* 2014; **24**: 786–792.
- 103 Honda S, Orii KO, Kobayashi J, Hayashi S, Imamura A, Imoto I *et al*. Novel deletion at Xq24 including the UBE2A gene in a patient with X-linked mental retardation. *J Hum Genet* 2010; **55**: 244–247.
- 104 Lee HW, Choi J, Shin H, Kim K, Yang J, Na M *et al*. Preso, a novel PSD-95-interacting FERM and PDZ domain protein that regulates dendritic spine morphogenesis. *J Neurosci* 2008; **28**: 14546–14556.
- 105 Mignon-Ravix C, Cacciagli P, Choucair N, Popovici C, Missirian C, Milh M *et al*. Intragenic rearrangements in X-linked intellectual deficiency: Results of a-CGH in a series of 54 patients and identification of TRPC5 and KLHL15 as potential XLID genes. *Am J Med Genet A* 2014; **164A**: 1991–1997.
- 106 Oberg EA, Nifoussi SK, Gingras AC, Strack S. Selective proteasomal degradation of the B $\beta$  subunit of protein phosphatase 2A by the E3 ubiquitin ligase adaptor Kelch-like 15. *J Biol Chem* 2012; **287**: 43378–43389.
- 107 Wylie CJ, Hendricks TJ, Zhang B, Wang L, Lu P, Leahy P *et al*. Distinct transcriptomes define rostral and caudal serotonin neurons. *J Neurosci* 2010; **30**: 670–684.
- 108 Poock B, Fischer S, Gunning D, Zipursky SL, Salecker I. Glial cells mediate target layer selection of retinal axons in the developing visual system of *Drosophila*. *Neuron* 2001; **29**: 99–113.
- 109 Zhao Y, Lang G, Ito S, Bonnet J, Metzger E, Sawatsubashi S *et al*. A TFC/STAGA module mediates histone H2A and H2B deubiquitination, coactivates nuclear receptors, and counteracts heterochromatin silencing. *Mol Cell* 2008; **29**: 92–101.
- 110 van Bokhoven H, Kramer JM. Disruption of the epigenetic code: an emerging mechanism in mental retardation. *Neurobiol Dis* 2010; **39**: 3–12.
- 111 Schwarz JM, Rodelsperger C, Schuelke M, Seelow D. MutationTaster evaluates disease-causing potential of sequence alterations. *Nat Methods* 2010; **7**: 575–576.
- 112 Bach I, Rodriguez-Esteban C, Carriere C, Bhushan A, Kronen A, Rose DW *et al*. RLIM inhibits functional activity of LIM homeodomain transcription factors via recruitment of the histone deacetylase complex. *Nat Genet* 1999; **22**: 394–399.
- 113 Ostendorff HP, Peirano RI, Peters MA, Schluter A, Bossenz M, Scheffner M *et al*. Ubiquitination-dependent cofactor exchange on LIM homeodomain transcription factors. *Nature* 2002; **416**: 99–103.
- 114 Castle CD, Cassimere EK, Lee J, Denicourt C. Las1L is a nucleolar protein required for cell proliferation and ribosome biogenesis. *Mol Cell Biol* 2010; **30**: 4404–4414.
- 115 Castle CD, Cassimere EK, Denicourt C. LAS1L interacts with the mammalian Rix1 complex to regulate ribosome biogenesis. *Mol Biol Cell* 2012; **23**: 716–728.
- 116 Fanis P, Gillemans N, Aghajaniyeh A, Pourfarzad F, Demmers J, Esteghamat F *et al*. Five friends of methylated chromatin target of protein-arginine-methyltransferase[prmt]-1 (chttop), a complex linking arginine methylation to desmoylation. *Mol Cell Proteomics* 2012; **11**: 1263–1273.
- 117 Ouyang J, Shi Y, Valin A, Xuan Y, Gill G. Direct binding of CoREST1 to SUMO-2/3 contributes to gene-specific repression by the LSD1/CoREST1/HDAC complex. *Mol Cell* 2009; **34**: 145–154.
- 118 Butterfield RJ, Stevenson TJ, Xing L, Newcomb TM, Nelson B, Zeng W *et al*. Congenital lethal motor neuron disease with a novel defect in ribosome biogenesis. *Neurology* 2014; **82**: 1322–1330.
- 119 Harakalova M, van den Boogaard MJ, Sinke R, van Lieshout S, van Tuil MC, Duran K *et al*. X-exome sequencing identifies a HDAC8 variant in a large pedigree with X-linked intellectual disability, truncal obesity, gynaecomastia, hypogonadism and unusual face. *J Med Genet* 2012; **49**: 539–543.
- 120 Ecker JR, Bickmore WA, Barroso I, Pritchard JK, Gilad Y, Segal E. Genomics: ENCODE explained. *Nature* 2012; **489**: 52–55.

- 121 Scheel O, Zdebik A, Lourdel S, Jentsch TJ. Voltage-dependent electrogenic chloride proton exchange by endosomal CLC proteins. *Nature* 2005; **436**: 424–427.
- 122 Yao I, Hata Y, Ide N, Hirao K, Deguchi M, Nishioka H *et al*. MAGUIN, a novel neuronal membrane-associated guanylate kinase-interacting protein. *J Biol Chem* 1999; **274**: 11889–11896.
- 123 Mo J, Lee D, Hong S, Han S, Yeo H, Sun W *et al*. Preso regulation of dendritic outgrowth through PI(4,5)P2-dependent PDZ interaction with betaPix. *Eur J Neurosci* 2012; **36**: 1960–1970.
- 124 Li SH, Li XJ. Huntingtin-protein interactions and the pathogenesis of Huntington's disease. *Trends Genet* 2004; **20**: 146–154.
- 125 Shin BS, Kim JR, Walker SE, Dong J, Lorsch JR, Dever TE. Initiation factor eIF2-gamma promotes eIF2-GTP-Met-tRNAi(Met) ternary complex binding to the 40S ribosome. *Nat Struct Mol Biol* 2011; **18**: 1227–1234.
- 126 Dufu K, Livingstone MJ, Seebacher J, Gygi SP, Wilson SA, Reed R. ATP is required for interactions between UAP56 and two conserved mRNA export proteins, Aly and CIP29, to assemble the TREX complex. *Genes Dev* 2010; **24**: 2043–2053.
- 127 Ma XM, Yoon SO, Richardson CJ, Julich K, Blenis J. SKAR links pre-mRNA splicing to mTOR/S6K1-mediated enhanced translation efficiency of spliced mRNAs. *Cell* 2008; **133**: 303–313.
- 128 Hughes CM, Rozenblatt-Rosen O, Milne TA, Copeland TD, Levine SS, Lee JC *et al*. Menin associates with a trithorax family histone methyltransferase complex and with the *hoxc8* locus. *Mol Cell* 2004; **13**: 587–597.
- 129 Sowa ME, Bennett EJ, Gygi SP, Harper JW. Defining the human deubiquitinating enzyme interaction landscape. *Cell* 2009; **138**: 389–403.
- 130 Klein U, Ramirez MT, Kobilka BK, von Zastrow M. A novel interaction between adrenergic receptors and the alpha-subunit of eukaryotic initiation factor 2B. *J Biol Chem* 1997; **272**: 19099–19102.
- 131 Prezeau L, Richman JG, Edwards SW, Limbird LE. The zeta isoform of 14-3-3 proteins interacts with the third intracellular loop of different alpha2-adrenergic receptor subtypes. *J Biol Chem* 1999; **274**: 13462–13469.
- 132 Furukawa M, He YJ, Borchers C, Xiong Y. Targeting of protein ubiquitination by BTB-Cullin 3-Roc1 ubiquitin ligases. *Nat Cell Biol* 2003; **5**: 1001–1007.
- 133 Markson G, Kiel C, Hyde R, Brown S, Charalabous P, Bremm A *et al*. Analysis of the human E2 ubiquitin conjugating enzyme protein interaction network. *Genome Res* 2009; **19**: 1905–1911.



This work is licensed under a Creative Commons Attribution-NonCommercial-NoDerivs 4.0 International License. The images or other third party material in this article are included in the article's Creative Commons license, unless indicated otherwise in the credit line; if the material is not included under the Creative Commons license, users will need to obtain permission from the license holder to reproduce the material. To view a copy of this license, visit <http://creativecommons.org/licenses/by-nc-nd/4.0/>

Supplementary Information accompanies the paper on the Molecular Psychiatry website (<http://www.nature.com/mp>)