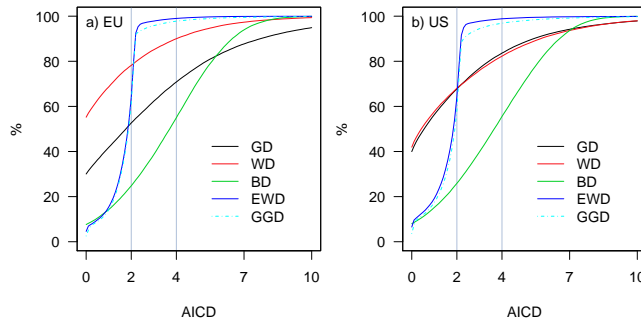


# Monitoring and quantifying future climate projections of dryness and wetness extremes: SPI bias

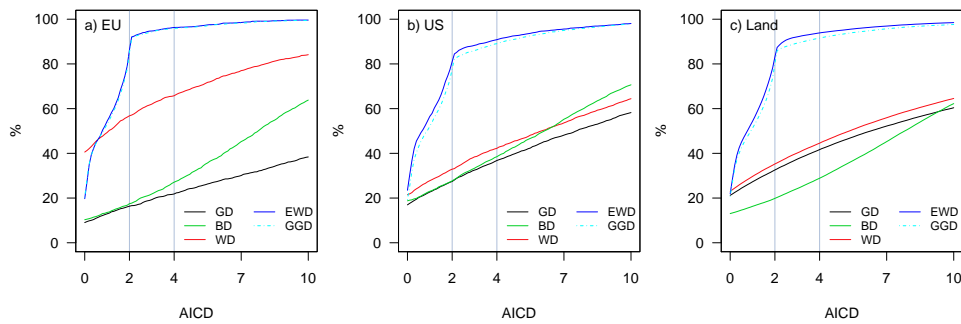
Frank Sienz, Oliver Bothe and Klaus Fraedrich

## Supplementary material

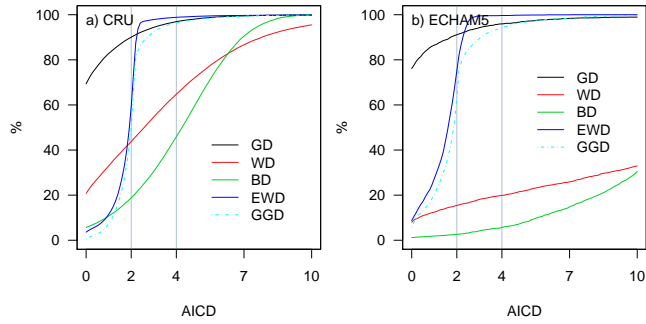
---



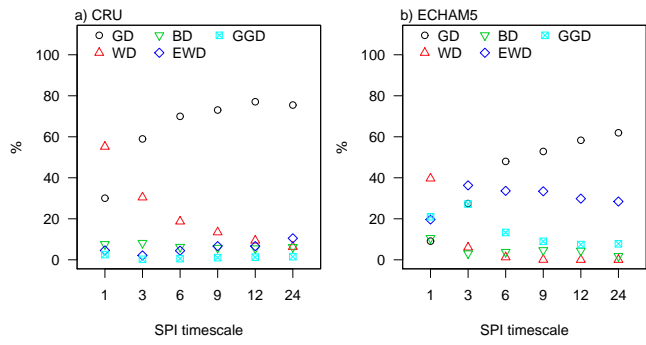
**Fig. S1.** AICD frequencies (CRU data set): percentages of all grid points and months a distribution yields AICD smaller or equal than a given value for a) the European region and b) the contiguous United States. AIC comparison with GD, WD, BD, EWD and GGD.



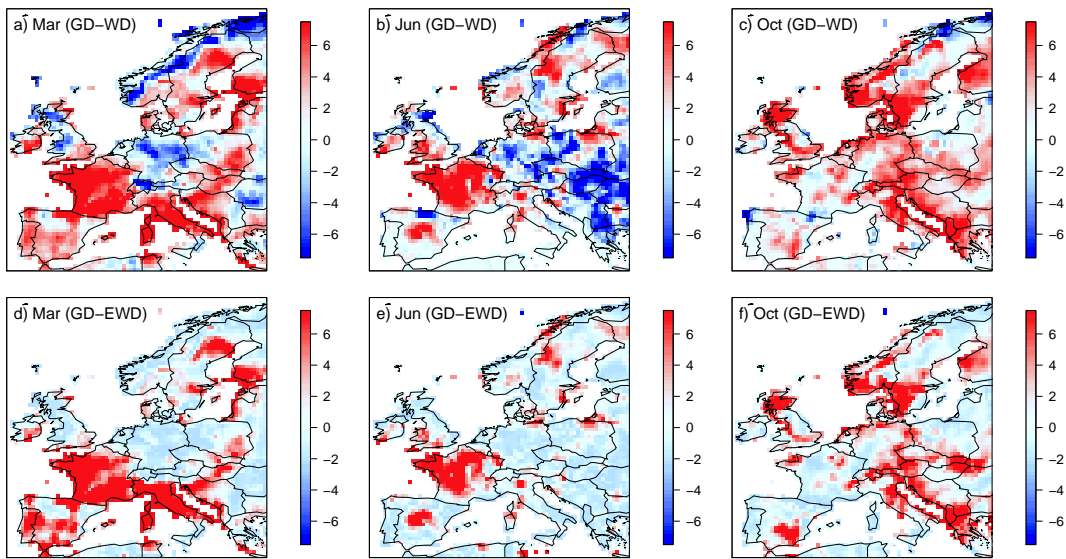
**Fig. S2.** AICD frequencies (ECHAM5 data set): percentages of all grid points and months a distribution yields AICD smaller or equal than a given value for a) the European region, b) the contiguous United States and c) global land areas. AIC comparison with GD, WD, BD, EWD and GGD.



**Fig. S3.** AICD frequencies for the simulated data sets, corresponding to a) CRU and b) ECHAM5 precipitation data in the European region. AIC comparison with GD, WD, BD, EWD and GGD.



**Fig. S4.** AICD frequencies for the simulated data sets, corresponding to a) CRU and b) ECHAM5 precipitation data in the European region. AIC comparison with GD, WD, BD, EWD and GGD.



**Fig. S5.** AICD comparison between a)-c) GD and WD and d)-f) GD and EWD for selected months (CRU data set). Shown are the differences between the AIC values, so that large positive (negative) values show GD (WD, respectively EWD) deficits.